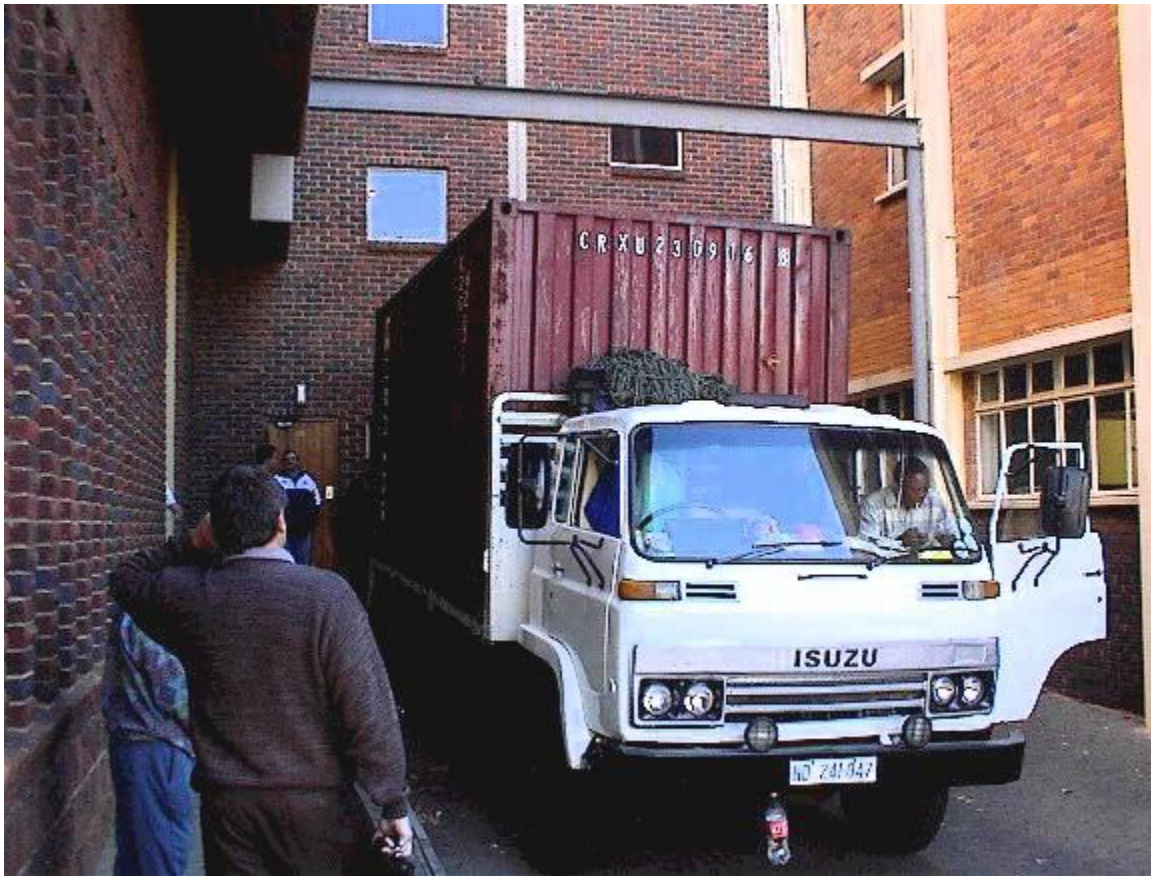


May 2002: Arrival of surface research apparatus from Max Planck
Mei 2002: Aankoms van oppervlaknavorsingsapparaat vanaf Max Planck

Arrival of donated surface research apparatus at the Physics Department (May 2002).



Dr. Koos Terblans and Profs Hendrik Swart and Gerrit van Wyk proudly stand alongside some of the new surface research apparatus. The apparatus was donated by the Max Planck Institute in Stuttgart, Germany.



The donated research apparatus arrives at the Instrumentation Division adjacent to the Physics Department. Inside the steel container there was two wooden crates, one weighing 1.8 tons and the other 3.7 tons.



A fork lift had to be used to get the crates out of the steel container.



The crates are lifted into the building.



The two wooden crates inside the Instrumentation Division's workshop.



Prof. Wiets Roos was eager to open the crates.



Prof. Hendrik Swart was soon to follow Prof. Roos example.



The crate's open and our first peek inside. Everything inside was neatly covered in watertight wrapping.



The one side of the crate is open and it's contents is clearly visible.



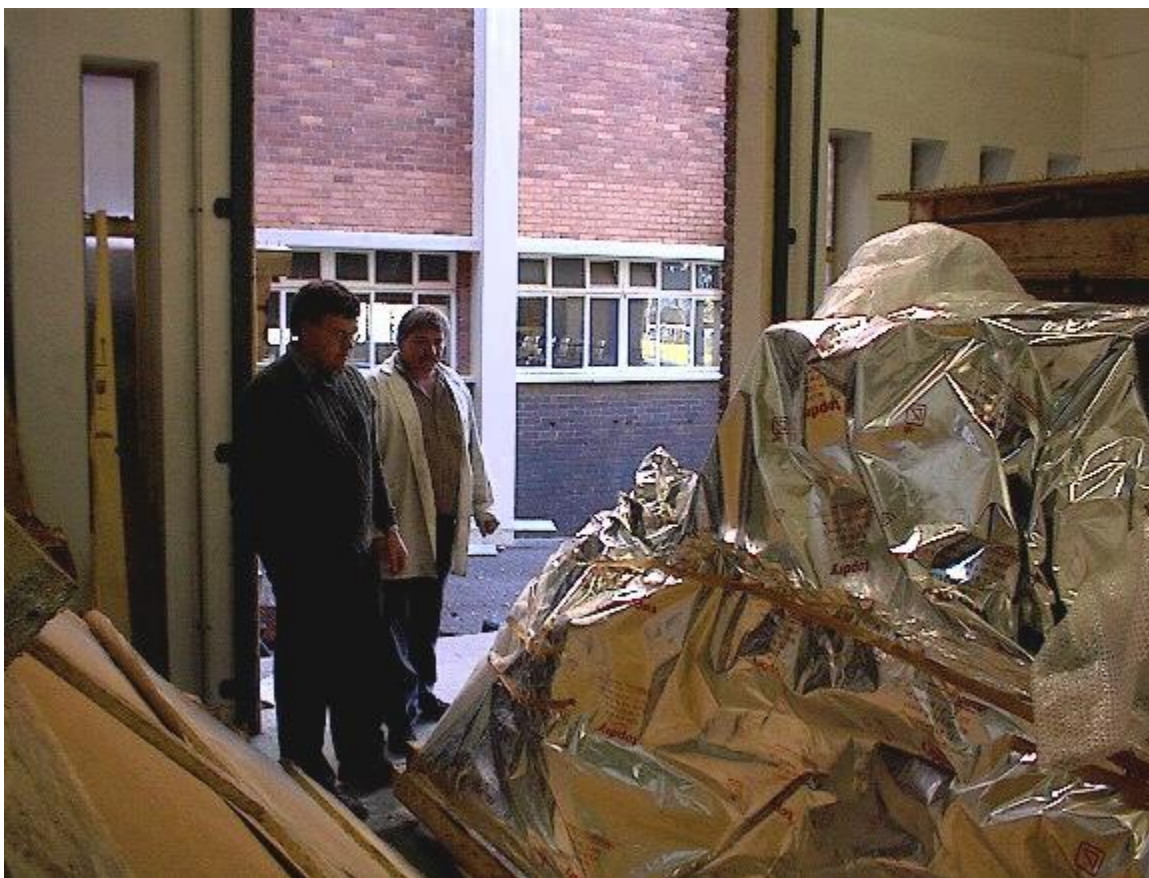
From left to right: Proff Wiets Roos, Hendrik Swart and dr. Koos Terblans start unpacking the apparatus.



The first crate is emptied and now the second crate is opened containing the bulk of the research apparatus.



Opening up a well packaged crate was tough and even the help of a chainsaw was needed.



The second crate is fully open. Prof. Hendrik Swart and Piet Botes from the Instrumentation Division looks on.



The watertight wrapping is removed and the research apparatus is now visible.



Dr. Koos Terblans gives a helping hand and removes some of the packing material.



...and even puts up a strong man display.



The heavy apparatus is lifted off the crate's floor...



...and wheeled into the Instrumentation Division's workshop. It will be stored here until the new lab in the basement of the Physics Department is completed.



A empty crate floor. All that's left from a day's hard work of unpacking.

