



Faculty of Health Sciences
Rural Community Initiative

Dr René Botha,
Dr Dirk Hagemeister,
Dr Carl van Ramusdonk,
Dr Ronelle Jansen
Dr Marizeth Jordaan
Dr Ansie Janse van Rensburg



Kopanang Le Fodize | Unite To Heal

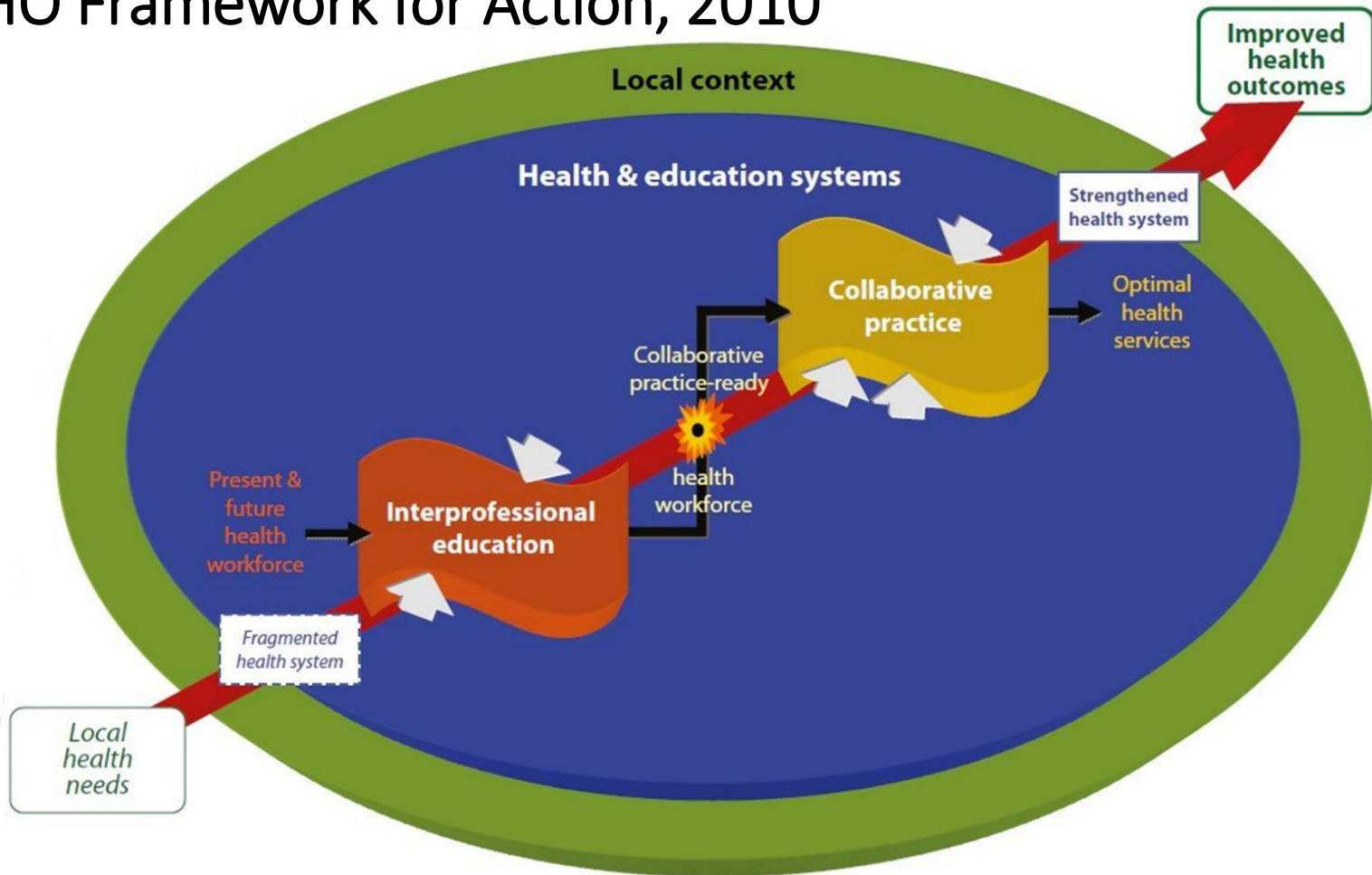
2023: Hybrid- F2F sessions + VIPE

15h25-15h30	Health dialogue	Madeleen Eygelaar
15h30-15h45	ICF	R Botha
15h45-15h55	Digital story	M Labuschagne
15h55-16h05	Medical arrangements & questions	R Botha and M Labuschagne
16h05-16h15	Feedback	



Origins

WHO Framework for Action, 2010



Steps to improve health outcomes



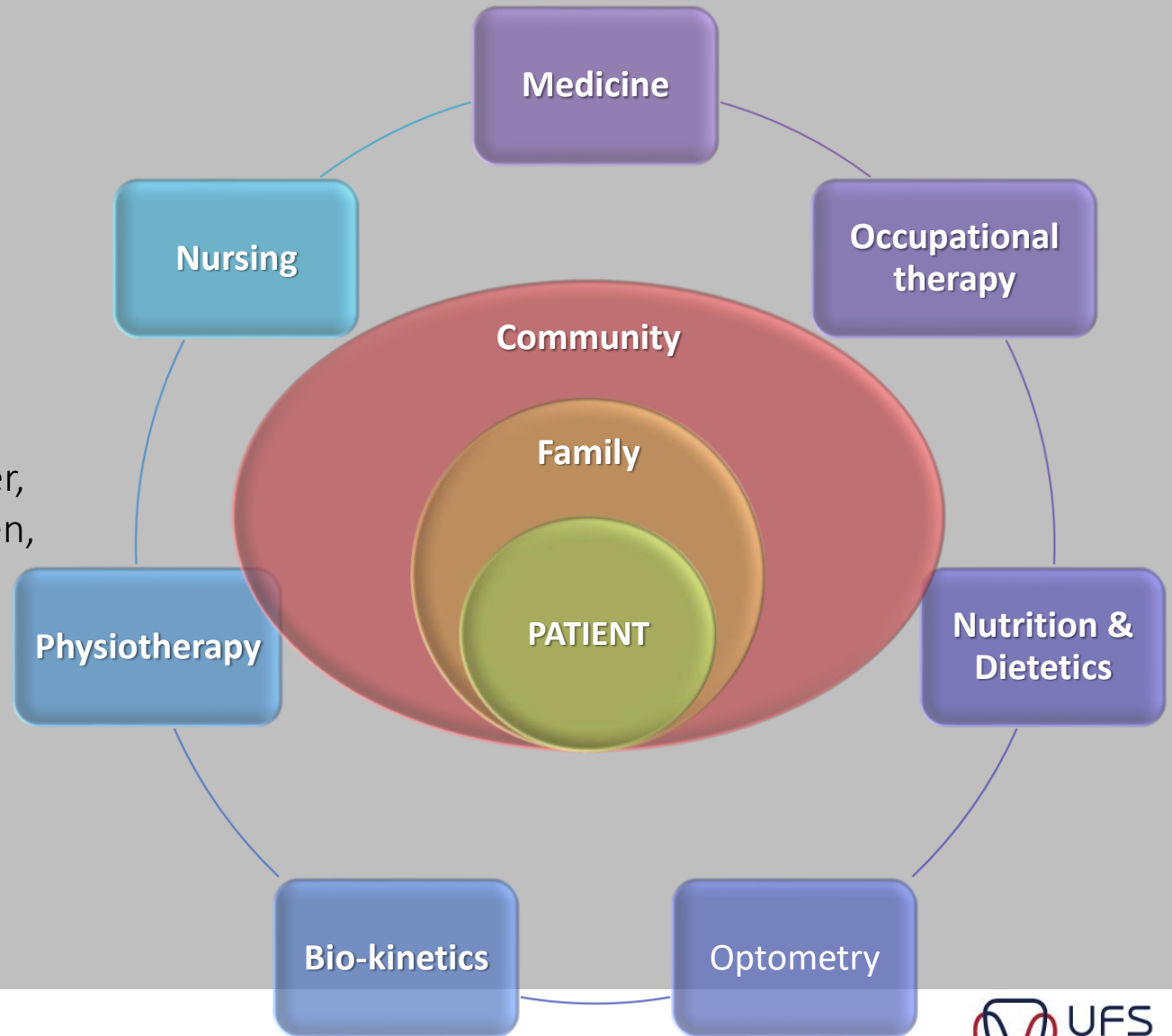
1. **Improve quality of care and health outcomes** (Barr et al., 2016; Dubouloz et al., 2010; Evans et al., 2011; Olenick & Allen, 2013; Rogers et al., 2016)
2. **Workforce planning** (Barr, Gray, Helme, Low, & Reeves, 2016; Craddock, O'Halloran, McPherson, Hean, & Hammick, 2013; Evans et al., 2011; WHO 2016)
3. **Healthcare reform** (Bajnok et al., 2012; Casimiro, MacDonald, Thompson, & Stodel, 2009; Hammick, Freeth, Koppel, Reeves, & Barr, 2007; Hean, Craddock, & Hammick, 2012; Thistlethwaite, 2012)

T: 051 401 9111 info@ufs.ac.za www.ufs.ac.za

Educational reform



INTERPROFESSIONAL CARE



Health professions boards
(Hean et al., 2012; Swisher,
Woodard, Quillen,
& Monroe, 2010)

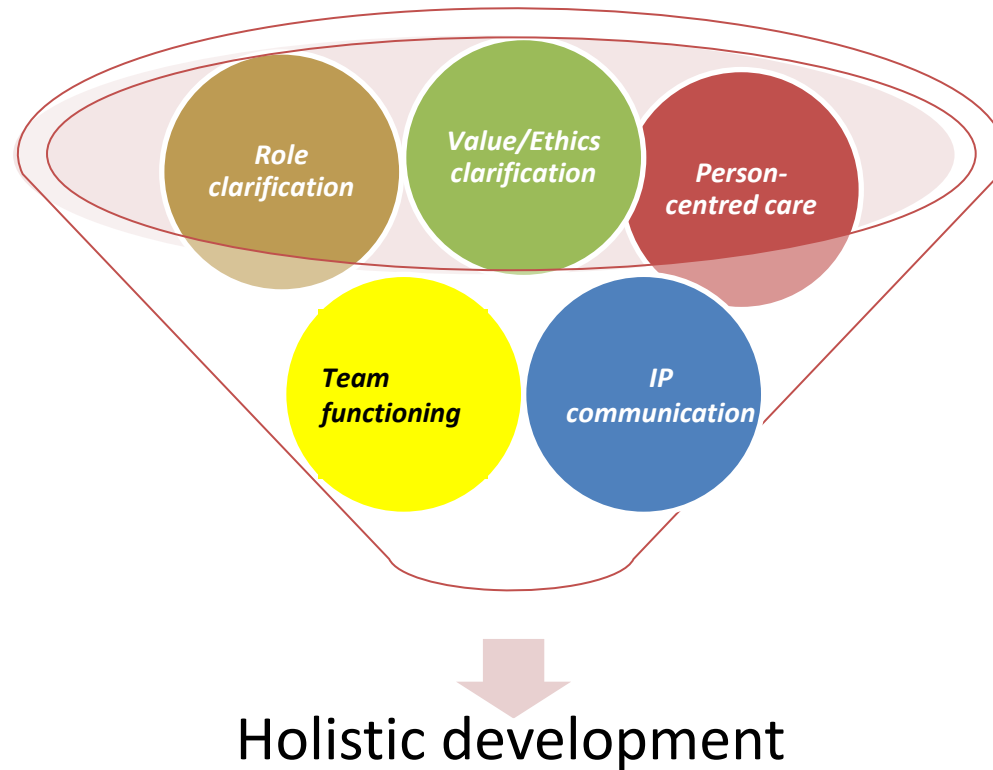
CORE COMPETENCIES & CLINICAL ATTRIBUTES



HPCSA 2014

Faculty of Health Sciences Rural Community Initiative

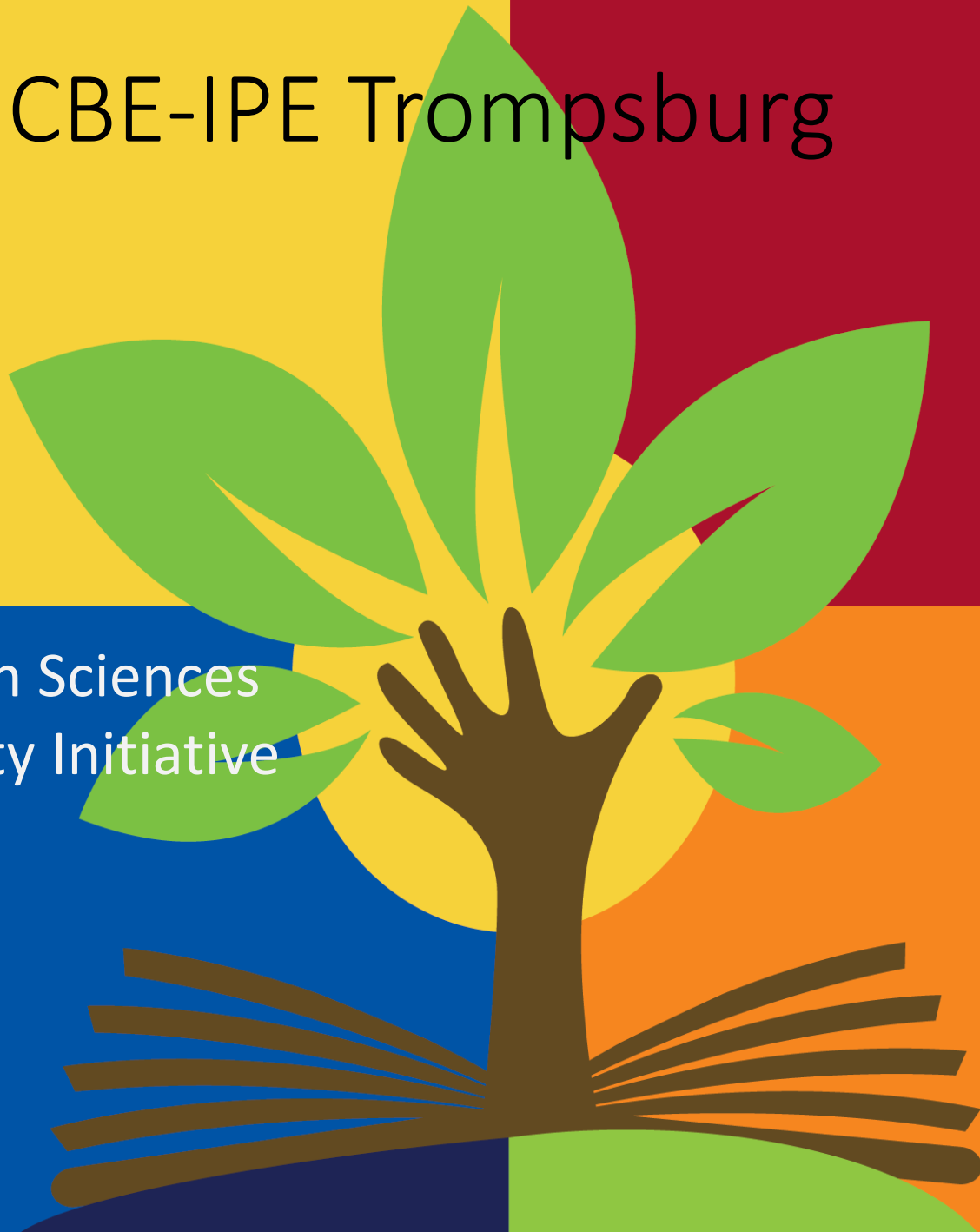
IPE Key competencies





CBE-IPE Trompsburg

Faculty of Health Sciences
Rural Community Initiative



Kopanang Le Foolize | Unite To Heal

WHAT ARE WE DOING AT THE UFS?

January/ February: IPE orientation sessions as preparation for CBE-IPE rotation in Trompsburg

2023: Hybrid- **VIPE**

Week before
Trompsburg
placement

F-2-F
orientation

VIPE
Videos and
activities

Simulation sessions

Trompsburg

Transference
to workplace

Collaborative
patient-
centered
care



Asynchronous Activities

Individual student activities

Engagement	Topic	Presenter
Video 1	Orientation to activities	Dr R Botha
Video 2	Community Based Education	Dr R Botha
Video 3	Collaborative practice concepts	Ms H Morgan
Activity 1	What is collaborative practice?	
Video 4	Person-centred care	Mrs A Welman
Activity 2	Characteristics of Person-centred care	
Video 5	Health dialogue	Dr M Reid
Activity 3	Health dialogue interaction video critique	
Video 6	Digital story	Dr R Botha
Video 7	ICF	Dr C Nyoni
Activity 4	ICF case-study	
Video 8	Faculty of Health Sciences Rural Community Initiative	Dr R Botha
Video 9	Orientation to platform	Dr R Botha



Blackboard

- https://ufs.blackboard.com/ultra/organizations/_8873_1/cl/outline

Sharing Link Validation x Activity Stream x +

https://ufs.blackboard.com/ultra/stream

Blackboard

Stream

Filter Show All ▾

Today Thursday, January 12, 2023

13 minutes | 2:27 PM **Interprofessional Education 2023 BFN Health**
New submissions ready to grade: Health Dialogue

6 hours **Interprofessional Education 2023 BFN Health**
New organization available: Interprofessional Education 2023 BFN Health

6 hours **HPEC7905 MAIN On**
Added: New content has been added to your course

Recent

Dec 31, 2022 **Performance Management**
Grade posted: Quiz 2
[View my grade](#)

Dec 31, 2022 **Performance Management**
Grade posted: Quiz 1
[View my grade](#)

Nov 22, 2022 **DHSE HPE programme BFN Health**

32°C Sunny

14:40 2023/01/12



Blackboard

- https://ufs.blackboard.com/ultra/organizations/_8873_1/cl/outline

Sharing Link Validation x Content x

https://ufs.blackboard.com/ultra/organizations/_8873_1/cl/outline

Interprofessional Education 2023 BFN Health Home Page

Edit Mode is: ON

Interprofessional Education 2023 BFN Health

Home Page

GENERAL INFORMATION

Faculty's website

Your Lecturer

STUDY MATERIAL / RESOURCES

Module guide

Study material

Additional Material

ASSESSMENT

Assessment Information

Previous Test and Exams Papers

Online Assessment

FACULTY OF HEALTH SCIENCES

Interprofessional Education 2023

Home Page

Add Organization Module

Customize Page

My Announcements

No Course or Organization Announcements have been posted in the last 7 days.
[more announcements...](#)

My Tasks

To Do

What's Past Due

[All Items \(0\)](#)

Actions

32°C Sunny

14:42 2023/01/12



Blackboard

- https://ufs.blackboard.com/ultra/organizations/_8873_1/cl/outline

Sharing Link Validation x Content x +

https://ufs.blackboard.com/ultra/organizations/_8873_1/cl/outline

Interprofessional Education 2023 BFN Health Module guide

Module guide

Build Content Assessments Tools Partner Content

MODULE GUIDE

All Guides and screening booklets

Enabled: Statistics Tracking

Attached Files:

- FHSRCISStudentGuide2023.pdf (1.249 MB)
- FHSRCIFacilitatorGuide2023.pdf (1.033 MB)
- FHSLIFESTYLE PROGRAMME2023Final.pdf (437.896 KB)
- LIFESTYLE MEMBERSHIP BOOKLET 2023 Final .pdf (423.295 KB)
- DMSCRESCREENING TOOLS 2023.pdf (1.269 MB)
- YPLPROGRAMME2023Final.pdf (390.977 KB)
- YLPAttendanceBOOKLET 2023 Final .pdf (373.69 KB)
- FHSRCIScreeningBookletLearners2023.pdf (957.984 KB)
- FHSRCISCORING AND INTERPRETATION BOOKLET 2023.pdf (1.406 MB)

Placement Reports 2022

Enabled: Statistics Tracking

Placement Report 2022-01-19

Enabled: Statistics Tracking

32°C Sunny

14:48 2023/01/12



Blackboard

- https://ufs.blackboard.com/ultra/organizations/_8873_1/cl/outline

Sharing Link Validation x Content x +

https://ufs.blackboard.com/ultra/organizations/_8873_1/cl/outline

Interprofessional Education 2023 BFN Health Home Page

Edit Mode is: ON

Interprofessional Education 2023 BFN Health

Home Page

GENERAL INFORMATION

Faculty's website

Your Lecturer

STUDY MATERIAL / RESOURCES

Module guide

Study material

Additional Material

ASSESSMENT

Assessment Information

Previous Test and Exams Papers

Online Assessment

FACULTY OF HEALTH SCIENCES

Interprofessional Education 2023

Home Page

Add Organization Module

Customize Page

My Announcements

No Course or Organization Announcements have been posted in the last 7 days.
[more announcements...](#)

My Tasks

To Do

What's Past Due

[All Items \(0\)](#)

32°C Sunny

14:42 2023/01/12



- https://ufs.blackboard.com/ultra/organizations/_8873_1/cl/outline

Sharing Link Validation x Content x +

https://ufs.blackboard.com/ultra/organizations/_8873_1/cl/outline

Education 2023 BFN Health

Home Page

GENERAL INFORMATION

Faculty's website

Your Lecturer

STUDY MATERIAL / RESOURCES

Module guide

Study material

Additional Material

ASSESSMENT

Assessment Information

Previous Test and Exams Papers

Online Assessment

My Grades

COMMUNICATION

Build Content Assessments Tools Partner Content

STUDY MATERIAL

Simulation guides

Enabled: Statistics Tracking

Attached Files:

- Simulation Session IPE facilitator guide.pdf (788.205 KB)
- Simulation Session IPE student information 1.pdf (505.323 KB)

Health Dialogue

Enabled: Statistics Tracking

Title: Study+material

Description: Health Dialogue

Date Added: 17 January 2022

Contributor: Kgosimang Mokhiti

Tags:

09:06

Play Media

Video 1 VIPE orientation

32°C Sunny

14:43 2023/01/12



Blackboard

Student activity and engagement will be monitored.
Reports will be communicated to different departments

Sharing Link Validation x Content x +

https://ufs.blackboard.com/ultra/organizations/_8873_1/cl/outline

Interprofessional Education 2023 BFN Health Home Page

Edit Mode is: ON

Interprofessional Education 2023 BFN Health

Home Page

GENERAL INFORMATION

Faculty's website

Your Lecturer

STUDY MATERIAL / RESOURCES

Module guide

Study material

Additional Material

ASSESSMENT

Assessment Information

Previous Test and Exams Papers

Online Assessment

FACULTY OF HEALTH SCIENCES

Interprofessional Education 2023

Home Page

Add Organization Module

Customize Page

My Announcements

No Course or Organization Announcements have been posted in the last 7 days.
[more announcements...](#)

My Tasks

To Do

What's Past Due

[All Items \(0\)](#)

Actions

32°C Sunny

14:42 2023/01/12



Blackboard

Student activity and engagement will be monitored.
Reports will be communicated to different departments

Sharing Link Validation x Content x +

https://ufs.blackboard.com/ultra/organizations/_8873_1/cl/outline

Interprofessional Education 2023 BFN Health Online Assessment

Edit Mode is: ON

Online Assessment

Build Content Assessments Tools Partner Content

ONLINE ASSESSMENT

Collaborative practice concepts

ICF- case study

Bob is 19 years old and lives in student accommodation in the city. He comes to your clinic because he is not feeling well. On inspection his skin looks flushed and he appears to be skinny. He tells you that during the past two weeks he has been really thirsty and his clothes don't fit anymore as he lost weight. Bob gets up at night to pass urine almost every two hours but attributes this to the fact he is drinking a lot of water as he is so thirsty. His vision is also blurred. Bob has been diagnosed with diabetes mellitus.

IPE Concepts

Person Centeredness

This activity relates to Video 4, Person Centeredness

Thursday, 12 January 2023 14:51

32°C

Virtual Community Based Education and Interprofessional Education

Synchronous Activities (students and facilitators) before simulation

- The activities below has to be completed online before facilitators and student groups attend the Friday simulation during the week before the IPE rotation
- The time and date of these activities are to be coordinated by facilitator and group members with the assistance of Ms Mokhethi (CBE office), who will create a discussion platform on BlackBoard (MokhethiRFS@ufs.ac.za)

Engagement	Topic	Instruction
Collaborative BlackBoard Activity 1	Get to know each other	Ask each person to state his/her name and attach an adjective that starts with the first letter of his or her name. The adjective must describe a dominant characteristic of the person e.g. <i>generous Grahame</i> , <i>dynamic Dave</i> . Students have to write this down and refer to them by this description for the rest of the IPE engagement. Students need to indicate from which profession they are.
Collaborative BlackBoard Activity 2	Health dialogue interaction video critique	After watching Health Dialogue, decide if the 3 key characteristics of health dialogue is present, and if so, how the characteristic is presented: <ol style="list-style-type: none">1. If any evidence of an " <i>equal, symbiotic health relationship</i>" is present, where it is clear that the patient is an equal partner in his own treatment plan, simultaneously benefitting his own health and the management plan of the HCP2. If it is clear that <i>shared responsibility/decision-making</i> occurred, with HCP and patient being clear on each one's distinctive role and responsibilities3. If a <i>health message</i> forms part of the interaction, but more so if the message is presented in a manner that is tailored for the specific patient.

Additional Material

ASSESSMENT

Assessment Information

Previous Test and Exams Papers

Online Assessment

My Grades

COMMUNICATION

Online Classes (Blackboard Collaborate Ultra)

Discussions

SUPPORT

Blackboard Assistance for Students

Sessions

Interprofessional Education 2022 BFN Health - Course Room
Unlocked (available)

Create Session

Filter by All Upcoming Sessions

24 Jan IPE Group Discussion
1/17/22, 3:26 PM - 1/17/22, 4:26 PM (in progress)



FACULTY OF HEALTH SCIENCES RURAL COMMUNITY INITIATIVE VIDEO



<https://www.youtube.com/watch?v=7NcDqTCtqzw>

SUPPORT THE TOKEN SHOP



T: 051 401 9111 info@ufs.ac.za www.ufs.ac.za

© Copyright reserved
Kopiereg voorbehou

Room 131E
Block A
Francois Retief Building

UNIVERSITY OF THE
FREE STATE
UNIVERSITEIT VAN DIE
VRYSTAAT
YUNIVESITHI YA
FREISTATA





WELCOME ON BOARD...

