



Faculty of Health Sciences Rural Community Initiative

Mobile Clinic Pilot

In an attempt to enrich rural primary healthcare through health professions students in collaborative practice, the Faculty of Health Science has created a mobile healthcare service that aims to

- Provide an innovative mobile health service for farming communities
- Cultivate an inclusive teaching and learning platform for healthcare providers.
- Equip healthcare providers with essential competencies for refuturing rural healthcare.
- Engage in community based research.

The mobile health service will be provided in collaboration with Free State Department of Health (FSDoH). The service was piloted over two weeks in the farming areas surrounding the towns of Trompsburg and Springfontein in the Southern Free State. This unique service will be recognisable by the branding in figure 1.



Figure 1 Branding of the mobile health service

Mobile clinic route

The vehicle should not spend a lot of time travelling and a maximum distance of the site from Trompsburg of 65km is proposed. Therefore it was decided that the vehicle will spend the entire day at the specific site- five sites per week. Farmers received a schedule of where the vehicle will be and what time; farmers from the surrounding farms transported community members from their farms to the site. The mobile service route around the town of Trompsburg is shown in figure 2.

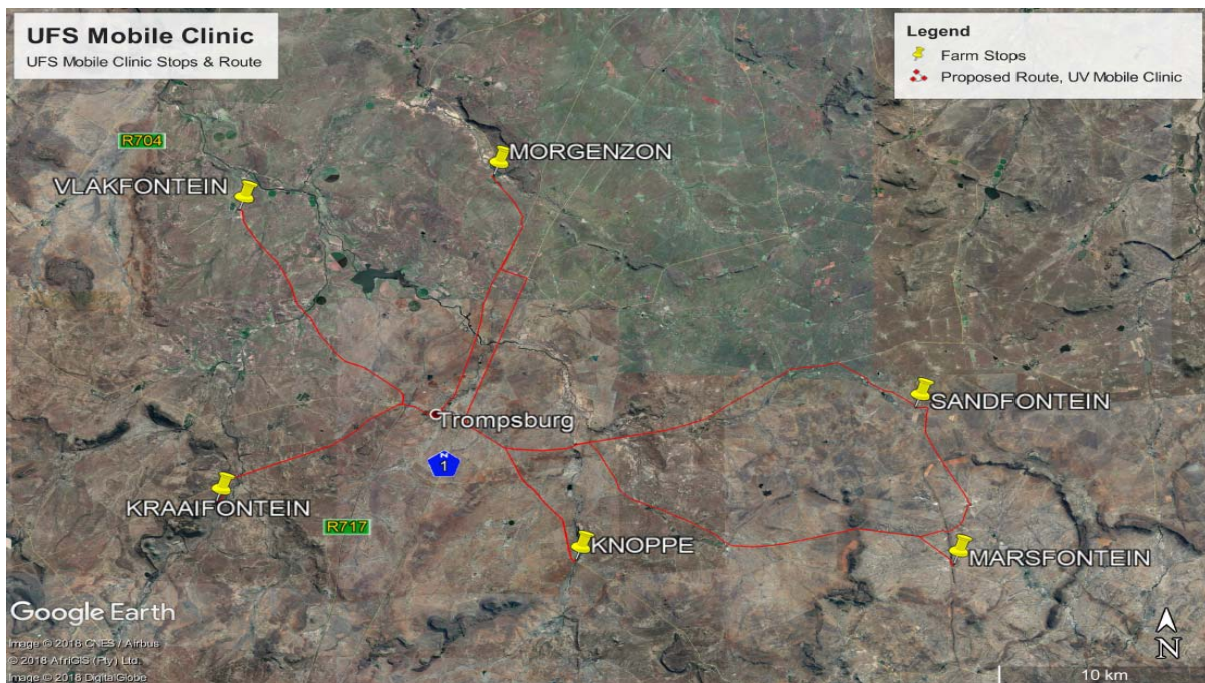


Figure 2 Shows the farms around Trompsburg identified as potential sites that formed part of the pilot

Table 1 shows the farms visited and number of patient seen during the pilot.

Table 1 Towns, farms and patient numbers.

Area	Farm	Patient numbers
Trompsburg	Vlakfontein	14
	Kraaifontein	12
	Morgenzon	10
	Knoppen	26
	Sandfontein	25
Springfontein	Rondefontein Kraansfontein	37
	Emerald hill Boschrand	63
	Prior Grange Spioenkop	45

The vehicle had one stop/ day from 9h00-15h30 in the Trompsburg area, but were able to combine some of the stops of Springfontein during the second week.



Figure 3 Faculty members with farmers and members from the Springfontein Agricultural Union

Faculty members met most of the farm owners as well as other farmers that transported their personnel from surrounding farms (figure 3). The purpose of the pilot was also to introduce the service to the farming community. All were very excited and indicated that the mobile clinic would be helpful for themselves and their personnel. The farming community (personnel and their dependents) was very appreciative for the intervention and cannot wait for the full service which is to start in April 2019.



A



B

Figure 4 A & B Faculty members engaged with farming community

No students participated in the pilot, but faculty from the Schools of Allied Health Professionals, Clinical Medicine and Nursing provided health services during the pilot (see figure 4 A and B). Faculty members were accompanied by personnel from FSDoH that included a professional nurse, nursing assistant and a community based worker. Files, medical consumables and medication were the responsibility of the FSDoH, this went well and we were also able to start to create a health profile of the communities.

Services that were provided during the pilot:

- Primary Health Care package of the Department of Health (DoH)
- Community screenings

Population mapping

Medical consumables were restocked and the files of existing patients that were seen the next day, were prepared in afternoons when the vehicle returned to Albert Nzula hospital.

During pilot faculty from the School of Allied Health Professionals also did a need's assessment to investigate how their students will form part of this mobile health service.

Interesting moments

The purpose of the pilot was to put the new mobile clinic through its paces, to verify whether the vehicle was fit for purpose and what needed to be changed. The images below are some interesting moments during the pilot.



A

B

Figure 5 A Faculty members doing trouble shooting & B Local Farmers assisted when the vehicle got stuck in a ditch

From these interesting moments (figure 5 A and B) it was clear that we need to purchase a shovel, pickax and maybe a tractor? The vehicle has returned to the manufacturer to address all issues related to construction that were experienced during the pilot.

The Office of Community Based Education and Rural Health would like to express its appreciation for the support and participation of faculty, FSDoH and the Trompsburg and Springfontein farming communities.