



## Kovsie guide 2013

Change is  
progress.

Know it. Become one of us.

# Kovsie guide

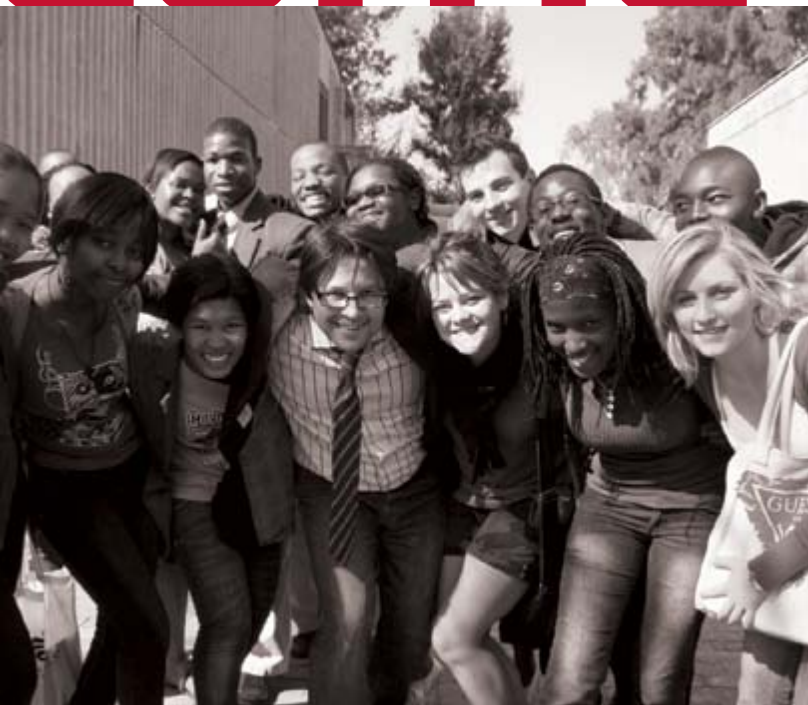
PO Box 339, Bloemfontein, 9300 | tel: +27(0)51 401 9111 | e-mail: [info@ufs.ac.za](mailto:info@ufs.ac.za) | [www.ufs.ac.za](http://www.ufs.ac.za)

UNIVERSITY OF THE  
FREE STATE  
UNIVERSITEIT VAN DIE  
VRYSTAAT  
YUNIVESITHI YA  
FREISTATA



 UFSUV |  UFSweb |  UFSweb

# Wel<sup>Dear new Foursie...</sup>come



Welcome to Kovskyland! We are extremely excited to receive you as part of our team and community here in the heart of our country. Every student and staff member at Kovsky play an important role in building a culture and climate of achievement and success for each one of our students to experience.

*Together we design and create an optimal environment where you can have a vibrant and full student life and learning experience.*

Academic excellence is a top priority for us all, but we complete your learning process by providing you with opportunities for leadership development and community service, as well as for cultural, sport and social activities.

We want you to lead a balanced life in becoming an ethical, assertive and well-educated leader in preparation for the day when you will make a valuable contribution to our country, our continent and the world.

*Rudi Buys*

Dean:  
Student Affairs



## Contents

Foreword	2
GATEWAY First Years' College	4
Application for admission	6
Faculty-specific admission requirements	7
Alternative access to the university	22
Students from other universities	24
International students	24
Application for re-admission after the interruption of study for one full year or longer	25
Academic Advice and Registration Process	26
Fees payable on registration	32
Bursaries and Financial Aid	37
Student Laptop Initiative	37
Academic Year dates 2013	39
Kovsie student accommodation	40
Payment of accommodation fees	41
City Residences	43
The All-in-One Campus	44
• Student Life Colleges	44
• Leadership Development	44
• Learning Communities and Student Associations	45
• Rag Community Service	45
• Kovsie Culture	45
• Spiritual Development	45
• Qwaqwa student life	46
• Student Counselling and Development	46
• Unit for Students with Disabilities	46
• Sport and Health	47
• Kovsie Sport	47
• Health and Wellness Centre	48

• Safety	49
• UFS identity card	49
• Kovsie Student Life Centres	49
• Student life and Thakaneng Bridge – Student Centre	49
• Library	50
• Photocopies	50
• General UFS information and liabilities	50

*Although the information in this guide has been compiled as carefully as possible, the Council and Senate accept no responsibility for any mistakes or omissions.*





# Gateway



## GATEWAY First-Years' College

*Prior to the start of classes, all first-years have the **unique opportunity** to enter the GATEWAY to succeed in your study career and in university life.*

The annual GATEWAY First-Years' College is a programme of student life and learning events that introduce you to campus and faculty life to help you to adjust to the university environment and to teach you the skills to perform well in your studies and prepare you as a well-rounded graduate.

The College experience includes a series of exciting lectures to guide your understanding and expectation of university life. Furthermore, it assists you to orientate yourself on campus and to all the resources available to support students. The College experience includes exciting student-life activities such as the Kopsie Rag programme, where you'll participate in fundraising with fun activities, e.g. the Rag Float procession and Festival, but also first-year sports events such as athletics and swimming, and cultural events such as the first-year Stagedoor event, where you can form part of a theatre production with all other first-years.

All these events provide you with well-structured opportunities to meet new friends and establish friendship networks that will support you during your studies. During the College experience, you will also be introduced to a peer mentor in a student mentoring programme to support you further in adjusting to university life.

The GATEWAY programme is available at  
<http://kovsielife.ufs.ac.za/>

### ***Welcoming ceremonies for the first-year students of the following faculties***

**Saturday 19 January 2013:**

**Tent in parking area in front of CR Swart building**

9:00 – 9:45: Economic and Management Sciences  
10:00 – 10:45: Health, Theology and Law  
11:00 – 11:45: Natural and Agricultural Sciences  
12:00 – 12:45: The Humanities and Education

## Application for admission

# Applications

### ***Application fee:***

Undergraduate students (SA) – R180,00  
Postgraduate students (SA) – R265,00  
Undergraduate students (International) – R385,00  
Postgraduate students (International) – R470,00

### ***Data capturing of applications and matric results:***

The application process is completed before you report at the university for registration. To ensure a smoother registration process, your particulars are captured on the computer system beforehand.

### ***Closing date for matric information:***

**13 January 2013**

### ***All applicants need to provide certified copies of the following documents:***

- National Senior Certificate or Statement of Symbols with your student number clearly indicated.
- Students who have studied at any other Higher Institutions must also attach an official academic record along with the Certificate of Conduct.
- Passport or ID document
- Proof of payment towards the registration fee.
- International students also need to provide an issued conditional exemption certificate.
- All applications received after 28 September 2012 are regarded as late applications and will be handled in a separate process. Definite implications such as the application for financial support, residential



placement and access to the University Preparation Programme could be negatively affected.

- If you choose to change your choice of career before registration you need to fill in a DV2 form available at [www.ufs.ac.za](http://www.ufs.ac.za), Studentportal or at the George du Toit Building, Room 163. Your completed DV2 form can be handed in at Room 163, George du Toit Building or faxed to 086 697 2604.

**All enquiries about admission applications:**  
**051 401 3693 and 051 401 3696**

# admission

FIRST-YEARS

## Admission requirements

### Students who passed the Grade 12 (NSC) examinations in 2008 or later

- Unless decided differently by the Senate, a student must, in order to be admitted to degree study, be in possession of a National Senior Certificate, which permits admission to degree study, which has been issued by the Matriculation Board and complies with the following admission requirements for specific study programmes.
- Unless decided differently by the Senate, a student must, in order to be admitted to diploma/certificate or occasional study, be in possession of a National Senior Certificate and comply with the following admission requirements for specific study programmes.

### Students who passed the Grade 12 examination prior to 2008 will be assisted on request.

#### Admission requirements for specific study programmes:

- A minimum of 50% (achievement level 4) is required in your chosen UFS language of instruction (Afr. or Eng.).
- The description of the degree/diploma/certificate/learning programme is preceded by the study code to which the specific degree/diploma/certificate/learning programme belongs.

### Calculation of the Admission Point (AP) with regard to candidates who passed Grade 12 in 2008 or later:

- Admission points (AP) are calculated according to the four (4) compulsory subjects from the “designated” list and the best of two (2) other school subjects passed during one (1) examination session.
- The subject Life Orientation with an achievement level of 5 or higher receives only one (1) TP point.

NCS Performance level	UFS Admission Point (AP)
7 (90% – 100%)	8
7 (80% – 89%)	7
6 (70% – 79%)	6
5 (60% – 69%)	5
4 (50% – 59%)	4
3 (40% – 49%)	3
2 (30% – 39%)	2

## Faculty-specific admission requirements

#### Abbreviations:

NSC = National Senior Certificate

AP = Admission Point

### Private Sector Management

Study Code	Description of the Programme	Admission Requirements
63011	BCom	<ul style="list-style-type: none"><li>• NSC + AP (30)</li><li>• Language of instruction = Achievement level 4 (50%)</li><li>• Mathematics = Achievement level 4 (50%)</li></ul>
63021	BCom (Economics)	
63031	BCom (Investment Management and Banking)	
63041	BCom (Human Resource Management)	
63051	BCom (Marketing)	
63821	BCom (Entrepreneurship)	<ul style="list-style-type: none"><li>• NSC + AP (34)</li><li>• Language of instruction = Achievement level 4 (50%)</li><li>• Mathematics = Achievement level (50%)</li></ul>
63091	BCom (Law)	
63381	BCom four-year Curriculum	<ul style="list-style-type: none"><li>• NSC + AP (25 – 29)</li><li>• Language of instruction = Achievement level 4 (50%)</li><li>• Mathematics = Achievement level 3 (40%)</li></ul>

Admission requirements are subject to change

### Public Sector Management

Study Code	Description of the Programme	Admission Requirements
63101	BAdmin	<ul style="list-style-type: none"><li>• NSC + AP (30)</li><li>• Language of instruction = Achievement level 4 (50%)</li></ul>
63561	BAdmin four-year Curriculum	<ul style="list-style-type: none"><li>• NSC + AP (25 – 29)</li><li>• Language of instruction = Achievement level 3 (40%)</li></ul>

Admission requirements are subject to change

### Training of Accountants

Study Code	Description of the Programme	Admission Requirements
63191	BAcc	<ul style="list-style-type: none"><li>• NSC + AP (34)</li><li>• Language of instruction = Achievement level 4 (50%)</li><li>• Mathematics = Achievement level 5 (60%)</li><li>• Accounting = Achievement level 5 (60%)</li></ul>
63211	BCom (Accounting)	<ul style="list-style-type: none"><li>• NSC + AP (30)</li><li>• Language of instruction = Achievement level 4 (50%)</li><li>• Mathematics = Achievement level 4 (50%)</li></ul>

Admission requirements are subject to change

# Economic+management sciences

ADMISSION

#### Contact

Dr E du Preez – 051 401 2173



ECONOMIC AND  
MANAGEMENT SCIENCES  
EKONOMIESE EN  
BESTUURSWETENSKAPPE

Liesel Alsemgeest:  
Lecturer in business management



“Life is  
cheques  
and  
balances.”

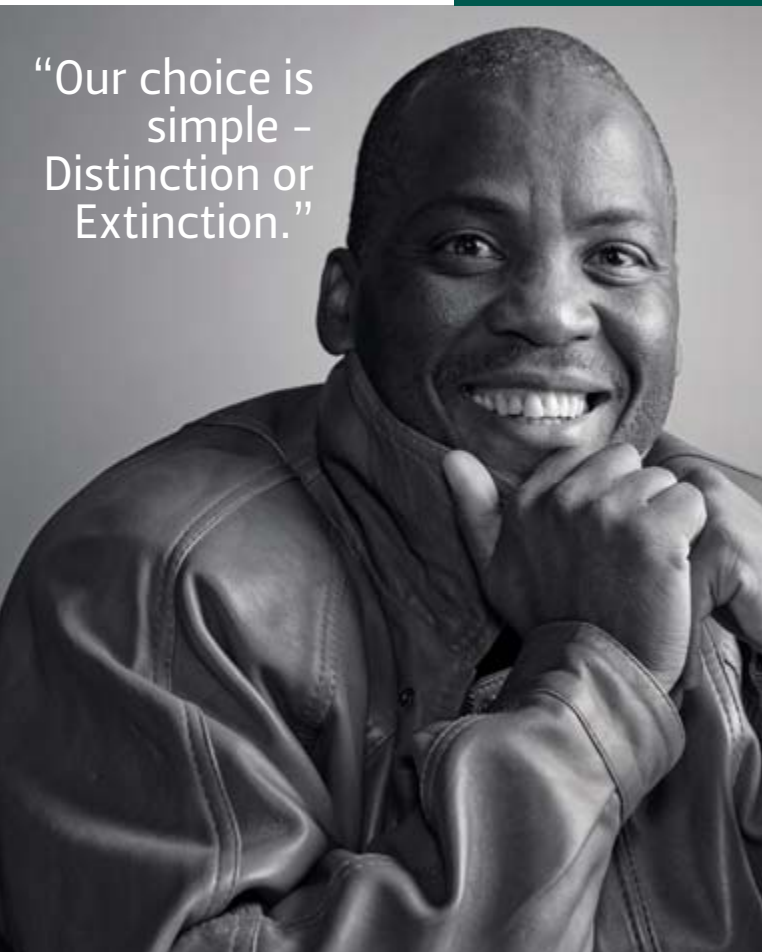


**Contact:**  
Programme director:  
Prof G du Toit  
051 401 9834

**Prof Loyiso Jita**  
Faculty of Education



“Our choice is  
simple –  
Distinction or  
Extinction.”



Study Code	Description of Programme	Admission Requirements
7311	BEd (Pre-school and Foundation Phase)	<ul style="list-style-type: none"> <li>• NSC + AP (30)</li> <li>• Language of instruction = Achievement level 4 (50%)</li> <li>• Subject to selection</li> </ul>
7312	BEd (Intermediate Phase)	<ul style="list-style-type: none"> <li>• Students with an NSC and AP of 25–29 can be admitted, subject to the inclusion of a Life Orientation module (DLO112) as an additional module in the first semester of their first year.</li> </ul> <p>Important: Additional admission requirements are applicable regarding the following disciplines. Contact the appropriate Faculty in this regard: Biology, Chemistry, Physics, Geography and Computer Information Systems; Music; Sesotho and Mathematics</p>
7314	BEd (Further Education and Training Phase)	<ul style="list-style-type: none"> <li>• NSC + AP (30)</li> <li>• Language of instruction = Achievement level 4 (50%)</li> <li>• Subject to selection</li> </ul> <p>Important: Additional admission requirements are applicable regarding the following disciplines. Contact the appropriate Faculty in this regard: Fine Arts, Biology, Chemistry, Physics, Geography and Computer Information Systems; Music; Sesotho; Mathematics</p>
7318	BEd (Further Education and Training Phase) – five-year curriculum	<ul style="list-style-type: none"> <li>• NSC + AP (25–29)</li> <li>• Language of instruction = Achievement level 4 (50%)</li> <li>• Subject to selection</li> </ul> <p>Important: These students will not be allowed to change to the BEd four-year curriculum.</p>

*Admission requirements are subject to change*

### School of Medicine

Study Code	Description of Programme	Admission Requirements
8302	BMedSc (Radiation Science)	<ul style="list-style-type: none"> <li>• NSC + AP (36)</li> <li>• Language of instruction = Achievement level 5 (60%)</li> <li>• Mathematics = Achievement level 5 (60%)</li> <li>• Physical Sciences = Achievement level 5 (60%)</li> <li>• Life Sciences = Achievement level 5 (60%) (Recommended)</li> </ul> <p>Subject to selection. Writing of NBT is compulsory for selection.</p>
8371	MBChB	<ul style="list-style-type: none"> <li>• NSC + AP (36)</li> <li>• Language of instruction = Achievement level 5 (60%)</li> <li>• Mathematics = Achievement level 5 (60%)</li> <li>• Physical Sciences = Achievement level 5 (60%)</li> <li>• Life Sciences = Achievement level 5 (60%)</li> </ul> <p>Subject to selection. Writing of NBT is compulsory for selection.</p>

*Admission requirements are subject to change*

**Contact:**  
Mrs M Seakge  
051 401 3739

“Community  
health is  
not only a  
remedial  
science. It is  
preventative  
culture.”



HEALTH SCIENCES  
GESONDHEIDSWETENSKAPPE

**Dr Lucia Meko**  
Lecturer in Dietetics

Contact  
Mrs M Coetsee  
051 401 2369

School for Allied Health Professions

Contact:  
Mrs M Seakge  
051 401 3739

Study Code	Description of Programme	Admission Requirements
8311	B Optometry	<ul style="list-style-type: none"><li>• NSC + AP (36)</li><li>• Language of instruction = Achievement level 5 (60%)</li><li>• Mathematics = Achievement level 5 (60%)</li></ul>
8320	BSc (Physiotherapy)	<ul style="list-style-type: none"><li>• Physical Sciences = Achievement level 5 (60%)</li><li>• Life Sciences = Achievement level 5 (60%)</li></ul> Subject to selection. Writing of NBT is compulsory for selection.
8331	B Occupational Therapy	<ul style="list-style-type: none"><li>• NSC + AP (36)</li><li>• Language of instruction = Achievement level 5 (60%)</li><li>• Mathematics = Achievement level 5 (60%)</li><li>• Physical Sciences = Achievement level 5 (60%) and/or Life Sciences = Achievement level 5 (60%)</li></ul> Subject to selection. Writing of NBT is compulsory for selection.
8361	BSc (Dietetics)	<ul style="list-style-type: none"><li>• NSC + AP (36)</li><li>• Language of instruction = Achievement level 5 (60%)</li><li>• Mathematics = Achievement level 4 (50%)</li><li>• Physical Sciences = Achievement level 4 (50%) and/or Life Sciences = Achievement level 4 (50%)</li></ul> Subject to selection. Writing of NBT is compulsory for selection.

Admission requirements are subject to change

School of Nursing

Study Code	Description of Programme	Admission Requirements
2320	BSocSc (Nursing)	<ul style="list-style-type: none"><li>• NSC + AP (30)</li><li>• Language of instruction = Achievement level 4 (50%)</li><li>• Mathematics = Achievement level 3 (40%) or Mathematical Literacy = Achievement level 6 (70%)</li><li>• Life Sciences = Achievement level 5 (60%) or Physical Sciences = Achievement level 4 (50%)</li></ul>

Admission requirements are subject to change

Contact:  
Mrs J Kloppe  
051 401 2361



Lize-Marie Swart  
Student in BA (Drama and Drama and Theatre Arts)

Diplomas

Study Code	Description of Programme	Admission Requirements
1011	Diploma in Music	<ul style="list-style-type: none"><li>• NSC + AP (25)</li><li>• Language of instruction = Achievement level 4 (50%)</li><li>• Music Literacy Unisa Grade 3 or equivalent</li><li>• Music Performance Unisa Grade 4 or equivalent</li></ul> Audition and theory proficiency test before 31 October compulsory. Contact the Odeion School of Music for an appointment, 051 401 2810.
1090	Diploma in Fine Arts	<ul style="list-style-type: none"><li>• NSC + AP (30)</li><li>• Language of instruction = Achievement level 4 (50%)</li><li>• Portfolio of creative work or evaluation test before 1 November</li></ul>

Admission requirements are subject to change

Degrees

Study Code	Description of Programme	Admission Requirements
1300	BA	<ul style="list-style-type: none"><li>• NSC + AP (30)</li><li>• Language of instruction = Achievement level 4 (50%)</li></ul>
1304	BA (Human Movement Sciences)	
1315	BA (Governance and Political Transformation)	
1323	BA (Language Practice)	
1361	BA (Communication Science) with specialisation in Corporate and Marketing Communication	
1362	BA (Communication Science) with specialisation in Media Studies and Journalism	
1391	BA (Management)	
1303	BA (Geography and Environmental Management)	<ul style="list-style-type: none"><li>• NSC + AP (30)</li><li>• Language of instruction = Achievement level 4 (50%)</li><li>• Mathematics = Achievement level 4 (50%)</li></ul>
1342	BMus	<ul style="list-style-type: none"><li>• NSC + AP (30)</li><li>• Language of instruction = Achievement level 4 (50%)</li><li>• Music Literacy Unisa Grade 5 or equivalent</li><li>• Music Performance Unisa Grade 7 or equivalent</li><li>• Audition and theory proficiency test before 31 October compulsory. Contact the Odeion School of Music for an appointment, 051 401 2810.</li></ul>
1330	BA (Music)	<ul style="list-style-type: none"><li>• NSC + AP (30)</li><li>• Language of instruction = Achievement level 4 (50%)</li><li>• Music Literacy Unisa Grade 5 or equivalent</li><li>• Music Performance Unisa Grade 7 or equivalent</li><li>• Audition and theory proficiency test before 31 October compulsory. Contact the Odeion School of Music for an appointment, 051 401 2810</li></ul>
1380	BA (Fine Arts)	<ul style="list-style-type: none"><li>• NSC + AP (30)</li><li>• Language of instruction = Achievement level 4 (50%)</li><li>• Portfolio of creative work or evaluation test before 1 November</li></ul>
1311	BA (Drama and Theatre Arts)	<ul style="list-style-type: none"><li>• NSC + AP (30)</li><li>• Language of instruction = Achievement level 4 (50%)</li><li>• Drama experience at school level recommended</li></ul>
1395	BA four-year curriculum	<ul style="list-style-type: none"><li>• NSC + AP (25 – 29)</li><li>• Language of instruction = Achievement level 4 (50%)</li><li>• NB: No new students will be admitted in the second semester</li></ul>

Admission requirements are subject to change

Social Sciences

Study Code	Description of Programme	Admission Requirements
2302	BSocSc (Human and Societal Dynamics)	<ul style="list-style-type: none"><li>• NSC + AP (30)</li><li>• Language of instruction = Achievement level 4 (50%)</li></ul>
2303	BSocSc (Human and Societal Dynamics) four-year curriculum	<ul style="list-style-type: none"><li>• NSC + AP (25 – 29)</li><li>• Language of instruction = Achievement level 4 (50%)</li><li>• Registration only for the extended programme (4 years)</li><li>• NB: No new students will be admitted in the second semester</li></ul>
2330	Baccalaureus in Social Work	<ul style="list-style-type: none"><li>• NSC + AP (30)</li><li>• Language of instruction = Achievement level 5 (60%) plus selection</li><li>• Closing date for applications 28 September 2012 for first year 2013</li></ul>

Admission requirements are subject to change



Tibi Mohapi  
Graduate in Media studies





### Faculty-specific admission requirements

**Contact:**  
Mrs A Kotze  
051 401 2735 /  
Mrs H Erasmus  
051 401 9777



Prof Rita-Marie Jansen  
Faculty of Law

Study Code	Description of Programme	Admission Requirements
3302	LLB	<ul style="list-style-type: none"> <li>NSC + AP (33)</li> <li>Language of instruction = Achievement level 6 (70%)</li> <li>Mathematics = Achievement level 4 (50%) or Mathematical Literacy = Achievement level 6 (70%)</li> </ul>
3303	LLB five-year curriculum	<ul style="list-style-type: none"> <li>NSC + AP (28 – 32)</li> <li>Language of instruction = Achievement level 4 (50%)</li> </ul> Notwithstanding this: (i) a candidate in possession of a National Senior Certificate with an AP of 25 – 27, and who has successfully completed the first year of study of an extended degree/ programme at another faculty; or (ii) an AP of less than 25 and who has successfully completed the entire University Preparation Programme (UPP) can, at the recommendation of the Dean, be admitted to either a first or second year of study of the 5 year LLB. Certain conditions apply.
3323	Bluris (Financial Planning Law)	<ul style="list-style-type: none"> <li>NSC + AP (30)</li> <li>Language of instruction = Achievement level 6 (70%)</li> <li>Mathematics = Achievement level 4 (50%) or Mathematical Literacy = Achievement level 6 (70%)</li> </ul> Notwithstanding this: (i) a candidate in possession of a National Senior Certificate with an AP of 25 – 29, and who has successfully completed the first year of study of an extended degree/programme at another faculty; or (ii) an AP of less than 25 and who has successfully completed the entire University Preparation Programme (UPP) can, at the recommendation of the Dean, be admitted to the first year of study of the 3-year Bluris with endorsement: Financial Planning Law. Certain conditions apply.
3324	Bluris (Occupational Risk Law)	<ul style="list-style-type: none"> <li>NSC + AP (30)</li> <li>Language of instruction = Achievement level 4 (50%)</li> </ul> Notwithstanding this: (i) a candidate in possession of a National Senior Certificate with an AP of 25–29, and who has successfully completed the first year of study of an extended degree/ programme at another faculty; or (ii) an AP of less than 25 and who has successfully completed the entire University Preparation Programme (UPP) can, at the recommendation of the Dean, be admitted to the first year of study of the 3-year Bluris with endorsement: Financial Planning Law. Certain conditions apply.

Admission requirements are subject to change

**NB: No new students will be admitted in the second semester.**

**Contact:**  
Programme directors:  
Prof SW Schoombie – 051 401 2329  
Mr M von Maltitz – 051 401 2609 – Bfn and  
Mrs MP Leripa – 058 718 5315 – Qwaqwa

### Natural Sciences

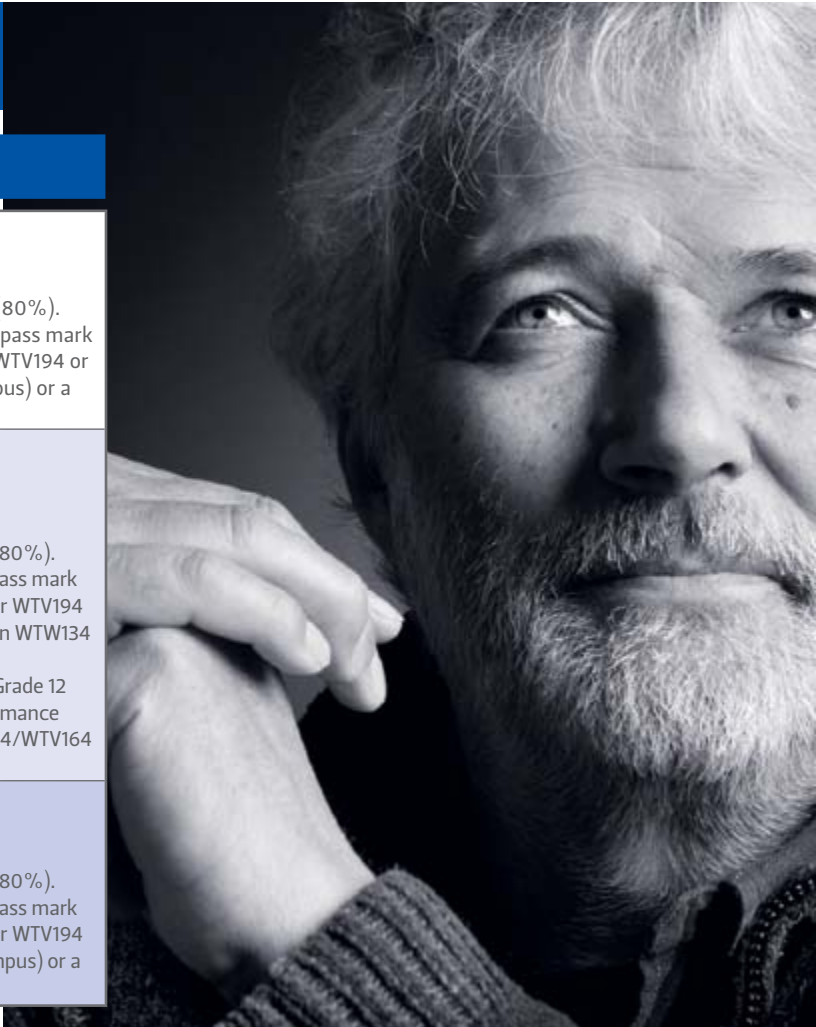
A BSc degree is offered within the following major fields of study:

#### Mathematical Sciences

Study Code	Campus	Description of Programme	Admission Requirements
4331	Bfn / QQ	Mathematics and Applied Mathematics	<ul style="list-style-type: none"> <li>NSC + AP (30)</li> <li>Language of instruction = Achievement level 4 (50%)</li> </ul>
4332	Bfn	Financial Mathematics	<ul style="list-style-type: none"> <li>Mathematics = Achievement level 7 (80%). Alternatively (for senior students), a pass mark of at least 70% in WTW/WTV164 or WTV194 or at least 60% in WTW184 (Main Campus) or a pass in WTW134 is required.</li> </ul>
4333	Bfn	Mathematical Statistics	
4335	Bfn	Risk Analysis	
4396	Bfn	Economics	<ul style="list-style-type: none"> <li>NSC + AP (30)</li> <li>Language of instruction = Achievement level 4 (50%).</li> <li>If WTW114 is chosen in the first year: Mathematics on performance level 7 (80%). Alternatively (for senior students), a pass mark of at least 70% in WTW164/WTV164 or WTV194 or at least 60% in WTW184 or a pass in WTW134 is required.</li> <li>If WTW134 is chosen in the first year: Grade 12 Mathematics (HG) E or SG (C) or performance level 5 or (for senior students) WTW164/WTV164 or WTW184 (Main Campus).</li> </ul>
4336	Bfn	Actuarial Science	<ul style="list-style-type: none"> <li>NSC + AP (34)</li> <li>Language of instruction = Achievement level 4 (50%)</li> </ul>
4394	Bfn	Investment Science	<ul style="list-style-type: none"> <li>Mathematics on performance level 7 (80%). Alternatively, (for senior students) a pass mark of at least 70% in WTW164/WTV164 or WTV194 or at least 60% in WTW184 (Main Campus) or a pass in WTW134 is required.</li> </ul>

Admission requirements are subject to change

Prof L Scott  
Department of Plant Sciences





Chemical and Physical Sciences

Programme directors: Dr J Venter • 051 401 3336 – Bfn and Ms MP Leripa 058 718 5315 – Qwaqwa

Contact:

Study Code	Campus	Description of Programme	Admission Requirements
4342 4343 4347	Bfn / QQ Bfn / QQ QQ	Physics Chemistry Material Sciences	<ul style="list-style-type: none"><li>NSC + AP (30)</li><li>Language of instruction = Achievement level 4 (50%)</li><li>Mathematics = Achievement level 5 (60%). Alternatively (for senior students), a pass mark in WTW164/WTV164 or WTV194 is required.</li><li>Life Sciences = Achievement level 5 (60%) or Physical Sciences on performance level 4 (50%).</li><li>If the modules WTW114 and/or WKS114 are included in the learning programme, Mathematics = Achievement level 7 (80%) required. Alternatively (for senior students) a pass mark of at least 70% in WTW164/ WTV164 or WTV194 or 60% in WTW184 (Main Campus) or a pass in WTW134 is required.</li></ul>
4344	Bfn	Astrophysics	<ul style="list-style-type: none"><li>NSC + AP (30)</li><li>Language of instruction = Achievement level 4 (50%)</li><li>Mathematics = Achievement level 7 (80%). Alternatively (for senior students), a minimum mark of 70% in WTW164/WTV164 or WTV194 is required.</li><li>Life Sciences = Achievement level 5 (60%) or Physical Sciences = Achievement level 4 (50%).</li></ul>

Admission requirements are subject to change

Geosciences – Geography

Programme director: Ms E Kruger • 051 401 2185

Contact:

Study Code	Campus	Description of Programme	Admission Requirements
4364	Bfn	Environmental Geography	<ul style="list-style-type: none"><li>NSC + AP (30)</li><li>Language of instruction = Achievement level 4 (50%)</li><li>Mathematics = Achievement level 5. Alternatively (for senior students), a pass mark in WTW164/WTV164 or WTV194 is required.</li><li>Life Sciences = Achievement level 5 (60%) or Physical Sciences = Achievement level 4 (50%).</li></ul>

Admission requirements are subject to change

Geosciences – Geology

Programme director: Dr H Praekelt • 051 401 2373

Contact:

Study Code	Campus	Description of Programme	Admission Requirements
4361 4365 4389	Bfn Bfn Bfn	Geology Environmental Geology Geo-chemistry	<ul style="list-style-type: none"><li><b>Selection</b></li><li>NSC + AP (30) (An AP 34 and higher is highly recommended).</li><li>Language of instruction = Achievement level 4 (50%)</li><li>Mathematics = Achievement level 5 (60%). Alternatively (for senior students), a pass mark in WTW164/WTV164 or WTV194 is required.</li><li>Physical Sciences = Achievement level 4 (50%). Alternatively (for senior students) a pass mark in CHE122 and CHE142 is required.</li></ul>

Admission requirements are subject to change

Contact:

Programme director: General First Year: Dr A van Wyk • 051 401 3924 – Bfn and Mrs MP Leripa 058 718 5315 – Qwaqwa

Biology

Study Code	Campus	Description of Programme	Admission Requirements
4302 4303 4304 4305 4306 4307 4358 4308 4376 4377	Bfn / QQ Bfn / QQ Bfn Bfn Bfn Bfn Bfn Bfn Bfn Bfn	Botany Zoology Entomology Microbiology Biochemistry Genetics Plant Molecular Biology Plant Health Human Molecular Biology Behavioural Genetics	<ul style="list-style-type: none"><li>NSC + AP (30)</li><li>Language of instruction = Achievement level 4 (50%)</li><li>Mathematics = Achievement level 5 (60%). Alternatively (for senior students), a pass mark in WTW164/WTV164 or WTV194 is required.</li><li>Life Sciences = Achievement level 5 (60%) or Physical Sciences = Achievement level 4 (50%).</li><li>If the modules WTW114 and/or WKS114 are included in the learning programme, Mathematics on performance level 7 (80%) is required. Alternatively (for senior students), a pass mark of at least 70% in WTW164/ WTV164 or WTV194 or with 60% in WTW184 (Main Campus) or a pass in WTW134 is required.</li></ul>

Admission requirements are subject to change

Information Technology (IT)

Programme directors: Dr A van Biljon • 051 401 2605/2754–Bfn and Mrs MP Leripa 058 718 5315 – Qwaqwa

Contact:

Study Code	Campus	Description of Programme	Admission Requirements
4381	Bfn	Mathematics	<ul style="list-style-type: none"><li>NSC + AP (30)</li><li>Language of instruction = Achievement level 4 (50%)</li><li>Mathematics = Achievement level 7 (80%)</li><li>Physical Science = Achievement level 4 (50%) or Life Sciences on performance level 5 (60%)</li></ul>
4382	Bfn	Industrial	<ul style="list-style-type: none"><li>NSC + AP (30)</li><li>Language of instruction = Achievement level 4 (50%)</li><li>Mathematics = Achievement level 5 (60%)</li><li>Physical Science = Achievement level 4 (50%) or Life Sciences = Achievement level 5 (60%)</li></ul>
4383	Bfn	Geographical Information Systems (GIS)	<ul style="list-style-type: none"><li>NSC + AP (30)</li><li>Language of instruction = Achievement level 4 (50%)</li><li>Mathematics = Achievement level 7 (80%) for WTW114 and WTW124 or Mathematics = Achievement level 5 (60%) for WTW134 and WTW144.</li><li>Physical Science on performance level 4 (50%) or Life Sciences on performance level 5 (60%)</li></ul>
4395	Bfn	Information Systems	<ul style="list-style-type: none"><li>NSC + AP (30)</li><li>Language of instruction = Achievement level 4 (50%)</li><li>Mathematics = Achievement level 4 (50%) for WTW174 or Mathematics level 5 (60%) for WTW134</li></ul>
4384	Qwaqwa	Management	<ul style="list-style-type: none"><li>NSC + AP (30)</li><li>Language of instruction = Achievement level 4 (50%)</li><li>Mathematics = Achievement level 5 (60%). Alternatively (for senior students) a pass mark in WTV164 is required.</li><li>Physical Science = Achievement level 4 (50%) or Life Sciences = Achievement level 5 (60%)</li><li>If the modules WTW114 and/or WKS114 are included in the learning programme, Mathematics = Achievement level 7 (80%) is required. Alternatively (for senior students), a pass mark of at least 70% in WTV164 or a pass in WTW134 is required.</li></ul>

Admission requirements are subject to change



Prof BC Viljoen  
Department Microbiological,  
Biochemical and Food Biotechnology

**Contact:**

Programme director:  
Prof HJH Steyn  
051 401 2304

**Consumer Sciences and Home Economics**

Study Code	Campus	Description of Programme	Admission Requirements
4351 4352	Bfn Bfn	Consumer Science: General Consumer Science: Food	<ul style="list-style-type: none"> <li>NSC + AP (30)</li> <li>Language of instruction = Achievement level 4 (50%)</li> </ul>
4354	Bfn	Home Economics: Food	<ul style="list-style-type: none"> <li>NSC + AP (30)</li> <li>Language of instruction = Achievement level 4 (50%)</li> <li>Mathematics = Achievement level 5 (60%). Alternatively (for senior students), a pass mark of at least 70% in WTW164/WTV164 or WTV194 is required.</li> <li>Life Sciences = Achievement level 5 (60%) or Physical Sciences = Achievement level 4 (50%).</li> </ul>

Admission requirements are subject to change

**4-year Curriculum (4393) and UPP in Natural and Agricultural Sciences (4002)**

Study Code	Campus	Description of Programme	Admission Requirements
4393	South Campus / Qwaqwa	Four-year curriculum (Extended Programme)	<ul style="list-style-type: none"> <li>NSC + AP (25 – 29)</li> <li>Language of instruction = Achievement level 4 (50%)</li> <li>Mathematics = Achievement level 3 (40%)</li> <li>Physical Sciences = Achievement level 3 (40%) or Life Sciences = Achievement level 4 (50%)</li> </ul>
4002 4006	South Campus / Qwaqwa	UPP in Natural and Agricultural Sciences	<ul style="list-style-type: none"> <li>NSC + AP (Minimum of 20)</li> <li>Language of instruction = Achievement level 3 (40%)</li> <li>Mathematics = Achievement level 3 (40%)</li> <li>Physical Sciences = Achievement level 3 (40%) or Life Sciences = Achievement level 3 (40%)</li> </ul>

Admission requirements are subject to change

**Contact:**

Ms R Meintjies  
051 401 2783  
– Bfn  
and Mrs MP Leripa  
058 718 5315  
– Qwaqwa

## Faculty-specific admission requirements

**Contact:**

Programme directors:  
Mrs M Els: 051 401 2257  
(Building Sciences)  
and Mr J Olivier: 051 401 2332  
(Architecture)

### Building Sciences

Study Code	Campus	Description of Programme	Admission Requirements
4310	Bfn	BArchStud	<ul style="list-style-type: none"> <li>Selection</li> <li>NSC + AP (30) (AP of 34 and higher is recommended)</li> <li>Language of instruction = Achievement level 4 (50%)</li> <li>Mathematics = Achievement level 5 (60%). Alternatively (for senior students), a pass mark in WTW164/WTV164 or WTV194/184 is required.</li> <li>Physical Sciences = Achievement level 4 (50%).</li> <li>A portfolio of creative work must be handed in during or prior to a selection interview.</li> </ul>
4386 4387	Bfn Bfn	BSc (Quantity Surveying) BSc (Construction Management)	<ul style="list-style-type: none"> <li>Selection</li> <li>NSC + AP (30) (An AP of 34 and higher is strongly recommended)</li> <li>Language of instruction = Achievement level 4 (50%)</li> <li>Mathematics = Achievement level 5 (60%). Alternatively (for senior students), a pass mark in WTW164/WTV164 or WTV194/184 is required.</li> <li>One of the following on performance level 4 (50%): Physical Sciences, Economics, Business Studies and Accounting.</li> </ul>

Admission requirements are subject to change

### Agricultural Programmes

The University of the Free State no longer offers diplomas in Agricultural Sciences. A University Preparation Programme (UPP) at the South Campus, provides access to BAgric (Main Campus).

**University Preparation Programme (UPP Agric) 5002 – South Campus**

Study Code	Campus	Description of Programme	Admission Requirements
5002	South Campus	UPP Agricultural Sciences	<ul style="list-style-type: none"> <li>NSC + AP (Minimum of 20)</li> <li>Language of instruction = Achievement level 3 (40%)</li> <li>Mathematical Literacy – level 6 (70%) or Mathematics – level 3 (40%)</li> </ul>

Admission requirements are subject to change

**Contact:**

Programme director:  
Prof JB van Wyk  
051 401 2677

**Philippa Tumubweinee**

Senior lecturer, Department of Architecture





## Faculty-specific admission requirements

### BAgric

BAgric degree in one of the following major fields of study:

Study Code	Campus	Description of Programme	Admission Requirements
5311 5312 5313 5314 5316 5317 5318	Bfn	Irrigation Management Animal Production Management Mixed-Farming Management Crop Production Management Agricultural Management Wildlife Management Agricultural Economics	<ul style="list-style-type: none"> <li>• NSC + AP (30)</li> <li>• Language of instruction = Achievement level 4 (50%)</li> <li>• Mathematics = Achievement level 3 (40%)</li> </ul>

*Admission requirements are subject to change*

### BScAgric

BScAgric degree in one of the following major fields of study:

Study Code	Campus	Description of Programme	Admission Requirements
5321 5322 5323 5324 5325 5326 5327 5329 5330 5331 5332 5334 5335 5336 5337 5338 5339 5340 5341 5342 5343 5344 5345 5346 5347 5348 5349 5350 5351	Bfn	Agronomy and Soil Science Agronomy and Agricultural Economics Agronomy and Agrometeorology Agronomy and Plant Breeding Agronomy and Plant Pathology Agronomy and Animal Science Agronomy and Food Science Irrigation Science and Agronomy Irrigation Science and Soil Science Irrigation Science and Natural Resources Plant Pathology and Entomology Soil Science and Agrometeorology Soil Science and Plant Pathology Soil Science and Grassland Science Agricultural Economics (General) Agricultural Economics and Natural Resources Agricultural Economics and Food Science Agrometeorology and Plant Pathology Agrometeorology and Grassland Science Plant Breeding and Grassland Science Plant Pathology and Plant Breeding Animal Science and Agricultural Economics Animal Sciences Animal Science and Food Science Animal Science and Grassland Science Food Science and Biochemistry Food Science and Microbiology Food Science and Chemistry Agronomy and Entomology	<ul style="list-style-type: none"> <li>• NSC + AP (30)</li> <li>• Language of instruction = Achievement level 4 (50%)</li> <li>• Mathematics = Achievement level 5 (60%). Alternatively (for senior students), a pass mark in WTW164/ WTV164 or WTV194/184 is required</li> <li>• Life Sciences = Achievement level 5 (60%) or Physical Sciences on performance level 4 (50%)</li> </ul>

*Admission requirements are subject to change*



### Contact:

Programme director:  
Ms A Labuschagne  
051 401 2617



Rev Maniraj Sukdaven  
Associated with the Faculty of Theology



Study Code	Description of Programme	Admission Requirements
9400 9303	BDiv * BTh	<ul style="list-style-type: none"> <li>• NSC + AP (30)</li> <li>• Language of instruction = Achievement level 4 (50%)</li> </ul>
9401 9304	BDiv (Extended Programme)** BTh (Extended Programme)	<ul style="list-style-type: none"> <li>• NSC + AP (25 – 29)</li> <li>• Language of instruction = Achievement level 4 (50%)</li> </ul>

*Admission requirements are subject to change*

\*BDiv 9400: CHE-accreditation pending. In the mean time students will enrol for the BTh (9303) and follow the BDiv curriculum. After CHE accreditation students will articulate to the BDiv.

\*\*BDiv (Extended programme) 9401: CHE accreditation pending. In the mean time students will enrol for the BTh Extended Curriculum (9304) and follow the BDiv Extended Curriculum. After CHE accreditation they will articulate to the BDiv.

# Alternative access to the university

## Contact:

Enquiries:  
Ms L Moilwa  
051 505 1201 • 505 1362

## University Preparation Programme: Bloemfontein (South Campus) and Sub-regions

The final date to apply for this programme is

# 10 January 2013

Students who are not successful in gaining admission to the university, but have an AP of 20, may follow a University Preparation Programme (UPP) to obtain access. The programme provides students with an opportunity to enjoy general formative and vocationally directed studies at various further and higher education institutions after successful completion of a bridging year.

The University Preparation Programme also addresses, through a course in Skills and Competencies in Lifelong Learning, the student's wider needs with regard to quality of personal life, study and reading skills, self-assertiveness, problem solving, and other generic competencies.

These students also attend an academic language course in English to improve their reading and writing skills for higher education purposes.

It is an open facility that welcomes all applicants who could not obtain access to a higher education institution (also University of the Free State).



## Alternative access to the university

### Study options:

Option 1 Economic and Management Sciences	Option 2 Human and Social Sciences	Option 3 Natural and Agricultural Sciences
<b>University Modules:</b> Introduction to Human Resource Management and Introduction to Individual Differences  + Development Modules: Course in Skills and Competencies for Lifelong Learning + Academic Literacy Course in English + Business Calculations	<b>University Modules:</b> Anthropology and English or Political Science and English or Psychology and English or Sociology and English or Psychology and Sociology or Basic Mathematics and English (Bridging option for Education: only in Bloemfontein and Oudtshoorn)  + Development Modules: Course in Skills and Competencies for Lifelong Learning + Academic Literacy Course in English + Basic Computer Literacy (Bloemfontein)	<b>University Modules:</b> Chemistry and Mathematics or B Agric (Agriculture) Programme (Only in Bloemfontein)  + Development Modules: Course in Skills and Competencies for Lifelong Learning + Academic Literacy Course in English + Basic Computer Literacy (Bloemfontein)
<b>Further Education and Training Modules:</b>	<b>Further Education and Training Modules:</b>	<b>Further Education and Training Modules:</b>
N4 course in Computer Practice and N4 course in Communication presented in the sub-regions	N4 course in Computer Practice and N4 course in Communication presented in the sub-regions	N4 course in Computer Practice and N4 course in Communication presented in the sub-regions

### To enter the programme, you have to meet the following admission requirements:

- A National Senior Certificate (NSC)
- 4 subjects with a minimum achievement level of 3 (40%–49%)
- University of the Free State (UFS) minimum Admission Point (AP) of 20
- Language of instruction: Minimum achievement level 3 (40%) (English or Afrikaans)
- Economic & Management Sciences: Minimum achievement level of 3 (40%) for Mathematics
- Natural Sciences:
  - \* Minimum achievement level of 3 (40%) for Mathematics
  - \* Life Sciences: Minimum achievement level of 3 (40%) OR
  - \* Physical Sciences: Minimum achievement level of 3 (40%)
- BAgri Agricultural Sciences: You need a minimum achievement level of 3 (40%) for Mathematics or a minimum achievement level of 6 (70%) for Mathematical Literacy.

The programme is presented in Bloemfontein, Bethlehem, Kimberley, Oudtshoorn, Sasolburg, Welkom and on the Qwaqwa Campus of the university.



## Alternative access to the university (continued)

For more information, or to apply for the programme, please contact:

The Programme Director:  
University Preparation Programme  
South Campus  
P O Box 339  
Bloemfontein  
9300

Tel: 051 505 1201/505 1362 • Fax: 051 505 1205

An application fee of R180 will be payable when you submit the application forms for processing. This fee is not refundable.

To be accepted to the University Preparation Programme you must have achieved at least 20 points according to the AP or M Scores. Now you can apply the applicable formula to your matriculation results to calculate your AP Score to see whether you meet this requirement.

**NB:** Please take note that students resident in the sub-regions, excluding Bloemfontein, who meet the admission requirements of the university, [Admission point (AP) of 30 and higher], may study locally and register for the university courses as mentioned in the three options.

### Calculation of Admission Point (AP)

#### Grade 12 Certificate from 2008

NSC Level of Achievement	UFS Admission point (AP)
7 (90% – 100%)	8
7 (80% – 89%)	7
6 (70% – 79%)	6
5 (60% – 69%)	5
4 (50% – 59%)	4
3 (40% – 49%)	3
2 (30% – 39%)	2
1 (0% – 29%)	–

In the subject Life Orientation you need an achievement level of 5 (60%) or higher to score only 1 point when calculating your admission Point (AP).

#### Matriculation Score formula (M Score)

The following admission policy of the university is applicable to all learners who had completed their school career before and up to the end of 2007.

Symbol	A	B	C	D	E	F
HG	8	7	6	5	4	3
SG	6	5	4	3	2	1

### Students from other universities

**Enquiries: +27(0) 51 401 3017**

Students from other universities (transfer students), that apply for the first time at the University of the Free State, who did not hand in an academic record or certificate of conduct with the application, must do so before 3 January 2012.

This academic record or certificate of conduct must be displayed during the registration process and will be attached to the registration form.

International students who studied at other South African universities must re-apply for a study permit to study at the University of the Free State. No student will be registered without a valid study permit issued for the University of the Free State.

Applications for exemption from modules must be accompanied by syllabuses of modules already passed.

Evaluating the content of the syllabuses is a time-consuming process, which could delay the registration process significantly.

### International students

Non-South African citizens without permanent residence permits must submit a valid study permit issued for the University of the Free State by the South African Department of Home Affairs to the Office for International Affairs, before registration.

International students must submit certified copies of documents (school certificates, diplomas, etc.) and proof of provisional exemption from SAQA with their application. Passport, study permit and proof of medical aid must be submitted before and during registration.

All international students must provide proof of belonging to an acceptable medical-aid fund, registered at the South African Medical Council. Hospital plans and travel insurance will not be accepted as medical-aid funds.

**NB:** No student will be allowed to register without the passport, proof of medical aid and the study permit issued for the University of the Free State.

The letter that confirms a student's admission to the university cannot be used as a study permit letter to apply for a study permit. Please contact the Office for International Affairs to issue such a letter.

International students who studied at other universities in South Africa must re-apply for a study permit to study at the University of the Free State. A clearance letter, as well as a transfer letter from the previous university in South Africa must be submitted during the application process.

The study permit can be renewed at cost of R425 and must be done so by the student through the Department of Home Affairs.

An annual international administration fee of R1 720 is currently charged on all international student accounts and is not refundable.

#### Enquiries:

Mrs Jeanne Niemann: +27 (0)51 401 3219  
Mrs Louise Steyn: +27 (0)51 401 2501  
Mrs Cecilia Sejake: +27 (0)51 401 9436  
Fax: +27 (0)51 401 9185  
Fax: +27 (0)86 218 5593  
E-mail: internationalenquiries@ufs.ac.za

### Application for re-admission after the interruption of study for one full year or longer

Senior students must note that they have to re-apply for admission after the interruption of study. The prescribed form must be completed and the admission fee paid. The form must then be handed in at Room 163, George du Toit Building together with the supporting documentation.

Admission will not be granted automatically but will be considered on the basis of performance.

Students whose studies and registration were terminated/discontinued because of financial reasons, must also apply for re-admission on the prescribed form. Academic progress will also be the criterion for consideration in this regard.

# Re-admission application

**Emme-Lancia Farao**  
*Undergraduate.*  
F1 scholar to European partner universities as a leadership development candidate. Primaria of Soetdoring Ladies Residence for 2013. Political Science student.

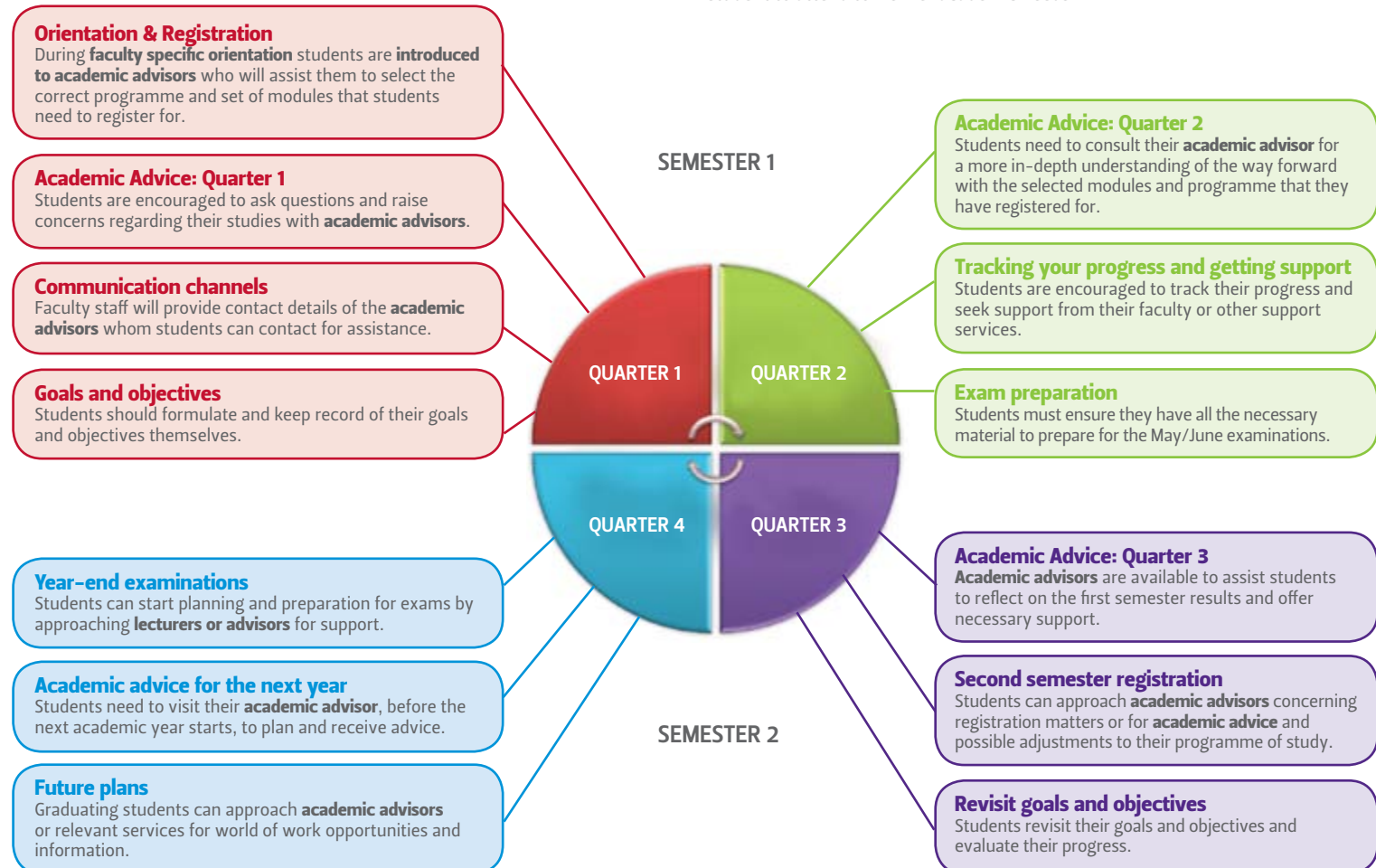
“I made it through the Me-generation to build the Regeneration.”



# Academic advice+ registration programme

## The Academic Advising cycle:

The University strives to support students in all their academic endeavours. Academic advice is a continuous process whereby students can receive support and advice in order to progress better through their higher education careers. This is a teaching and learning process where staff and student engagement plays an equal role. However, it remains the responsibility of the student to attend to his/her academic needs.



## Academic advice and registration programme

\*Academic advisor(s) – During faculty specific orientation, students are introduced to their academic advisor who will assist them throughout the year with their academic needs.

**\*\* All students in the Faculty of Health Sciences** (School of Medicine and School for Allied Health Professions) are registered automatically by the faculty as soon as proof of payment is received and acceptance is confirmed.

**\*\*\*Students in the Faculty of Health Sciences (undergraduate)** follow a set curriculum. This implies that students do not receive academic advice in which modules to take. Students with problems or questions regarding their curriculum may discuss this with the relevant programme director.

### Important information:

Your official UFS e-mail address (studentnumber@ufs4life.ac.za) should be monitored on a regular basis. This e-mail address serves as the official electronic communication channel between the University and the student. Please note that other e-mail addresses will not be used.

The rules of the University of the Free State are in all respects applicable to you during the course of your studies.

- General rules may change from year to year. Please ensure that you are familiar with the applicable rules before registration.
- Curriculum compilation takes place in accordance with faculty rules. If there is any uncertainty about degree/module codes, please obtain curriculum enrolment advice before registration.

## Academic Advice: Before registration

**It is compulsory for ALL FIRST YEAR STUDENTS to attend the Academic Advice programme, prior to registration.**

- Students must obtain academic advice before registration.
- Distance tuition students in the Faculty of Law, who studies through the e-learning programme can contact the e-learning helpdesk at ilearn@ufs.ac.za.
- Approved distance tuition students in the programmes BSc (Quantity Surveying) and BSc (Construction Management) can contact the Department at vanwyke@ufs.ac.za.
- Students experiencing problems with modules not appearing on/accepted by the electronic self-service process should visit the campus to resolve these problems, regardless of whether the studies are offered on campus or off campus (Distance learning or e-learning). No queries/approvals by e-mail or fax can be accepted.
- Academic advice/approval for first year students will be provided in the venues as indicated in the programme (21–25 January 2013).
- Module information available on blackboard is applicable to Distance learning, e-learning and residential students.

## Academic Advice Programme:

**Academic Advice Programme for Students who completed the University Preparation Programme in 2012**

Students in the faculties of Economic and Management Sciences and Humanities, who completed the University Preparation Programme (UPP) during 2012, can obtain curriculum enrolment advice prior to registration at the Callie Human Centre (Main Campus) from 21 – 25 January 2013.

## Academic Advice Programme for all First Year Students (Residential and non-residential)

Students in the faculties of Economic and Management Sciences, Natural and Agricultural Sciences, Humanities, Education, Law and Theology, who will commence with their first year of academic study in undergraduate qualifications, can obtain academic advice prior to registration from 21–25 January 2013.

Callie Human Centre	08:00 – 12:00	12:00 – 16:30
21 January 2013	Economic and Management Sciences (Private Sector Management qualifications)	Economic and Management Science (Public Sector Management and Accounting qualifications)
22 January 2013	Natural and Agricultural Sciences (BSc and B Consumer Sciences qualifications)	Natural and Agricultural Sciences (Building Sciences and Agricultural Sciences qualifications)
23 January 2013	Humanities (All qualifications)	Humanities (All qualifications)
24 January 2013	Education (All qualifications)	Education (All qualifications)
25 January 2013	Law and Theology (All qualifications)	Law and Theology (All qualifications)

## Academic Advice Programme for Senior Students (non-residential and residential students)

Non-residential students – city residences  
Residential students – campus residences

Senior students doing undergraduate study, study for honours qualifications and postgraduate certificates or diplomas in the faculties of Economic and Management Sciences, Natural and Agricultural Sciences, Humanities, Education, Law and Theology, can obtain academic advice prior to registration from 14–19 January 2013 and 28–31 January 2013. Please note that



Academic advice and registration programme (continued)

postgraduate academic advice for residential and non-residential students in the Education programmes, can also be obtained on Saturday 19 January 2013.

Week 1: 14–19 January 2013: Senior non-residential students

Callie Human Centre	08:00 – 12:00	12:00 – 16:30
14 January 2013	Economic and Management Sciences (Private Sector Management qualifications)	Economic and Management Science (Public Sector Management and Accounting qualifications)
15 January 2013	Natural and Agricultural Sciences (BSc and B Consumer Sciences qualifications)	Natural and Agricultural Sciences (Building Sciences and Agricultural Sciences qualifications)
16 January 2013	Humanities (All qualifications)	Humanities (All qualifications)
17 January 2013	Education (All qualifications)	Education (All qualifications)
18 January 2013	Law and Theology (All qualifications)	Law and Theology (All qualifications)
19 January 2013	Education (Honours, PGDE, Masters and Doctoral Degrees) at the Winkie Direko Building	Education (Honours, PGDE, Masters and Doctoral Degrees) at the Winkie Direko Building until 14:00

Week 2: 28–31 January 2013: Senior residential students

Callie Human Centre	08:00 – 12:00	12:00 – 16:30
28 January 2013	Economic and Management Sciences (Private Sector Management qualifications)	Economic and Management Sciences (Public Sector Management and Accounting qualifications)
29 January 2013	Natural and Agricultural Sciences (BSc and B Consumer Sciences qualifications)	Natural and Agricultural Sciences (Building Sciences and Agricultural Sciences qualifications)
30 January 2013	Humanities (All qualifications)	Education (All qualifications)
31 January 2013	Law and Theology (All qualifications)	Law and Theology (All qualifications)

Modules are offered as follows:

- First-semester modules – January to June (May to June examination)
- Second-semester modules – July to November (October to November examination)
- Year modules – January to November (October to November examination)

Personal and electronic registration on campus

First-year students register from 21–25 January 2013 from 8:00 to 16:30. Senior students register from 14–18 January 2013 (non-residential) and 28–31 January 2013 (residential) from 8:00 to 16:30. Registration takes place at the Examination Centre in EXR2 and EXR4. Staff will be available for assistance.

Students in the following categories register in person on campus:

- Modules offered for occasional studies.
- Modules not forming part of the curriculum concerned.
- Students registering for extended programmes.
- Students in the Faculty of Education (ACE/NPDE/masters degrees) – registration handled by the faculty in the Winkie Direko Building.
- Students studying for a Nursing degree.
- BML degree at the UFS School of Management
- MBA degree at the UFS School of Management
- International students (non-RSA citizens) cannot register electronically. Please contact the Office for International Affairs.

The following should be at hand when you report for registration:

- A black pen
- Your active student number (If you have interrupted your studies for longer than a calendar year, your number will be inactive.)
- The deposit advice/receipt with regard to:
  - \* Required prescribed payment in advance (deposit) of tuition fees, or proof of a reserved bursary/loan, or one already granted
- If applicable:
  - \* Proof of payment with regard to the application for a Conditional Exemption Certificate, or the renewal thereof
  - \* Proof of payment for outstanding fees
  - \* Proof of advance payment for residence fees
  - \* Proof of the amount payable by international students
- Numerical code of your qualification
- The alphanumeric codes of the modules for which you want to register
- Identity document:
  - \* South African citizens should have their identity document at hand, or a copy thereof, or acceptable proof of verification of the identity number
- International students who will be attending lectures/work sessions mainly on campus must be in possession of the following:
  - \* An already issued study permit for studies at the University of the Free State, with a copy thereof
  - \* A valid passport for studying at the University of the Free State
  - \* Proof of full medical coverage for the duration of the studies – also applicable to students with permanent residence permits as well as asylum seekers
  - \* Letter of confirmation from the department (UFS) with regard to study status (full-time or part-time student) according to the curriculum
  - \* Yellow card: proof of immunisation
- Chinese students: SAQA letters

**NB:** Postponement of registration will not be granted if proof of documentation is not available in time. In this regard, it must be stressed that international students should be in possession of the required documents before reporting for registration.

Change of Qualification: before registration

A prospective student who wants to change qualifications before registering, must complete a **DV2** form and personally see to it that the necessary approval, as required on the DV form [qualification code and module code(s)], is obtained.

Changes apply to the following students:

Students who have applied for admission to study at the university **for the first time** and would like to follow a course of study other than the one initially applied for **and** have not yet registered (DV2).

DV2 forms can be obtained at the counter of Student Academic Services in the George du Toit Administration Building and be submitted at Room 163, George du Toit Administration Building, during the course of the year.

Module rectifications, however, take place during the registration periods

- First semester: 9 January 2013 to 8 February 2013
- Second semester: 15–19 July 2013

Proof of Registration

**NB:** It is the responsibility of the student to ensure that his/her registration has been completed correctly [correct study code/module code(s)/centre of presentation]. Postponement of registration will not be granted if proof of documentation is not available in time. In this regard it must be stressed that international students should be in possession of the required documents before reporting for registration

- The last day for registration is 8 February 2013. No faxes or e-mails will be accepted for registration.
- After the capturing of modules has been completed, a proof of registration will be available.
  - A proof of registration is issued at the registration point during personal registrations. A proof of registration can also be printed during the online self-help registration process.
  - Do not waste your time attending lectures that do not appear on your proof of registration. In such cases official results will be withheld, and all possible academic credit obtained, will be forfeited.
  - Campus students must collect their supplementary notes soon as possible after registration at BYTES DOCUMENT SOLUTIONS: Study Material Centre, Level 1, SASOL Library.
  - Distance education students in BSc (Quantity Surveying) and BSc

Moses Mohokare

F1 scholar to American partner universities as a leadership candidate.



- (Construction Management) must send their registration (proof of registration) as confirmation per fax to Mrs van Wyk at 051 401 2165 so that study material for registered modules can be dispatched.
- e-Learning students, BML students excluded, must confirm their completed registration at the e-Learning helpdesk at: [ilearn@ufs.ac.za](mailto:ilearn@ufs.ac.za)
  - Module information available on Blackboard is applicable to distance education, e-learning and residential students.

Changing of modules: After registration

Cancellation of modules

After an academic registration has been completed, all students can freely make changes (cancellation/discontinuation of modules) by means of the electronic self-service platform.

First semester:

15 February 2013 (cancellation with financial credit). No financial credit will be granted for first-semester modules discontinued after 15 February 2013, while half of the course fees for year modules discontinued from the same date will not be refundable.

Second semester:

15 August 2013 (cancellation with financial credit). No financial credit will be granted for second-semester modules and year modules discontinued after 15 August 2013.

## Academic advice and registration programme (continued)

### Adding of modules

Once an academic registration has been completed, modules can be added electronically until 8 February 2013.

**First semester: 4–8 February 2013**

**Second semester: 15–19 July 2013.**

Changes must be made on campus in person. Requests must not be submitted to lecturers/departments. No requests via mail / fax / e-mail / telephone will be accepted. An additional amount of R200 per module is payable for adding of modules after course control date (8 February 2013).

### Checking of registration

Students must ensure that they are registered correctly on or before the last day allowed (first semester: 8 February 2013) for changes to avoid financial complications or problems with their bursaries.

After this date, no modules may be registered by students. First semester modules and year modules may be cancelled up to 15 February 2013. Modules for the second semester can be registered up until 19 July 2013. Second semester modules may be cancelled up to 15 August 2013.

Uncompleted/discontinued modules registered for a specific year cannot be carried over to the next year, and a new registration process must be followed.

### Incorrect module registrations

In motivated cases, incorrect registrations can be rectified for a fee before the start of the examination, on condition that the module(s) is/are in the same subject field, e.g. if a student is registered for OBS324 instead of OBS364.

An additional amount of R80 per module is payable for changing module codes after course control dates.

### Changing of qualification: after registration

A **registered** student who wants to change his/her qualification, must complete the DV2 form and personally see to it that the required approval, as required on the DV form [qualification code and module code(s)], is obtained.

These changes concern the following students:

Students registered for a specific qualification and who wish to switch to a different qualification before completion of the qualification, have to complete a DV2 form. DV2 forms can be obtained at the counter for Student

Academic Services in the George du Toit Administration Building. DV2 forms can be handed in at Room 163, George du Toit Administration Building. Module corrections, however, take place during the registration periods.

**First semester: 4–8 February 2013**

**Second semester: 15–19 July 2013**

### Attendance of lectures/work sessions for campus and distance education students

Prospective students must be registered by **8 February 2013 (1st semester) and 19 July 2013 (2nd semester)**. As from 11 February 2013, no lectures/contact sessions may be attended without being officially registered for them.

**NB: Students in distance education/e-learning programmes and i-learning programmes will not have access to study material or the i-learn platform before they have been officially registered for it.**

Check your proof of registration (available after capturing of registration data) to make sure you are indeed registered for the specific module(s) you wish to study.

Despite the attendance of classes/work sessions and the possible submission of tests/assignments, no results will be made available and/or academic credit granted for modules not officially registered.

### Complete cancellation / discontinuation of study

Notice of discontinuation of academic registration can be given as follows:

- Students may cancel/discontinue modules themselves on the PeopleSoft self-service page ([www.ufs.ac.za/register2013](http://www.ufs.ac.za/register2013)) throughout the year of registration, except during the examination periods.
- A notice of discontinuation of academic registration may be submitted to the administrative faculty officer concerned in the George du Toit Administration Building.
- A student who has already left the university, must send the notice by registered post to:

The Senior Director: Student Academic Services  
PO Box 339  
BLOEMFONTEIN  
9300

**NB: The date on which the notice is handed in at/received by the University will be considered the date of notification for the purposes of calculating the amount due.**

**Please note the cut off dates:**

- **First semester, last day: 15 February 2013**
- **Second semester, last day: 15 August 2013**

**NB: Cancellations received per fax/telephone/e-mail will not be accepted.**

- Social Work students must report to the Department of Social Work before giving notice of cancellation.
- Nursing students must report to the School of Nursing before giving notice of cancellation.

### Financial liability in the case of cancellations

**Minimum cost:** If a student cancels all his/her courses before 15 February 2013, he/she is liable for a minimum amount of R1 460 unless he/she was registered for one or more courses, the price of which the sum total is less than R1 460.

### Cut-off dates for cancellations

**First-semester courses:**

Cancellation after 15 February 2013: No credit will be granted for first semester modules discontinued after 15 February 2013, while half of the course fees for year modules discontinued after the same date will not be refundable.

**Second-semester courses:**

Cancellation after 15 August 2013: No credit will be granted for second semester and/or year modules if discontinued after 15 August 2013.

### Change of address

It is the student's responsibility to inform the university about any change of address.







## Fees payable

### Fees Payable

Although the information included in this guide has been compiled as carefully as possible, the Council and Senate accept no responsibility for any errors or omissions.

Please note:

- Amounts quoted are for SA and SADC students registered on the Bloemfontein Campus.
- The agreement that results from the admission or registration of a student shall be deemed to have been concluded at Bloemfontein notwithstanding the method of registration.
- The registration of a student only becomes official after the required fees have been paid and the student has received an official proof of registration and receipt.

Payment before registration	SA students	International students
Residential students	R10 890,00	R17 660,00
Non-residential students	R5 765,00	R9 970,00

(Amounts subject to change)

Payments in advance are payable **five (5) working days** prior to registration. **Students will not be able to register until these amounts reflect as credits on their Tuition Fee Accounts.** Should the tuition fees be less than the amounts required, the full amount is payable.

In cases where financial aid (bursary/loan) is received, the amount payable in advance will be reduced by the amount of the financial aid. **(SA Students only)**

Proof of the financial aid must be faxed to 051 401 3579 five working (5) days prior to registration.

The original proof of bursary/loan must be presented upon registration.

**NB: We would like to bring to your attention that, for security reasons, no money will be accepted at the Registration Centre during the registration process.**

### Programme prices 2013

Tuition Fees are charged per module. Programme prices will vary according to the modules registered for and are estimated average costs per year. International Non-SADEC students pay the actual module price plus 50%.

Faculty Economic and Management Sciences	
Private Sector Management	
BCom	R23 130
BCom (Economics)	R24 420
BCom (Investment Management and Banking)	R24 330
BCom (Human Resource Management)	R22 040
BCom (Marketing)	R20 310
BCom (Entrepreneurship)	R20 580
BCom (Law)	R26 330
BCom four-year Curriculum	R19 830
Public Sector Management	
BAdmin	R20 370
BAdmin four-year Curriculum	R19 550
Training of Accountants	
BAcc	R25 410
BCom (Accounting)	R24 060
Humanities	
BA	R20 090
BA (Human Movement Sciences)	R18 710
BA (Governance and Political Transformation)	R20 000
BA (Communication Science) with specialisation in Corporate and Marketing Communication	R22 010
BA (Communication Science) with specialisation in Media Studies and Journalism	R23 850
BA (Drama and Theatre Arts)	R20 100

Social Sciences	
BSocSc (Human and Societal Dynamics)	R21 520
Baccalaureus in Social Work	R21 480

Faculty of Health Sciences	
School of Medicine	
BMedSc (Radiation Science)	R29 820
MBChB	R33 280

School for Allied Health Professions	
B Optometry	R27 130
BSc (Physiotherapy)	R24 270
B Occupational Therapy	R26 640
BSc (Dietetics)	R28 110

School of Nursing	
BSocSc (Nursing)	R24 483

Faculty of Natural and Agricultural Sciences	
Physics	R24 600
Chemistry	R24 600
Biology	R24 600
Geology	R26 000
Microbiology	R26 000
Information Technology (IT)	R24 190
Consumer Sciences	R28 190
BArchStud	R29 300
BSc (Quantity Surveying)	R24 000
BSc Agric	R32 570

Faculty of Education	
BEd	R19 960

Fees payable (continued)

Faculty of Law	
LLB	R24 020
Bluris (Financial Planning Law)	R20 050
Bluris (Occupational Risk Law)	R20 050

Faculty of Theology	
BDiv	R19 830
BTh	R19 830

**NB: All programme prices cannot be published. Quotations for official UFS programmes can be obtained online. Please see [www.ufs.ac.za](http://www.ufs.ac.za), and follow the links: Students–Tuition Fees–Quotation.**

**Tuition Fee enquiries: +27(0) 51 401 2806/3003 or [tuitionfees@ufs.ac.za](mailto:tuitionfees@ufs.ac.za)**



**Additional registration fee**

If a student attends lectures in a course not registered for, the student will have to pay an additional amount of R200 per module, should approval for registration after the expiry date be granted. The fee is payable in addition to the tuition fees for the course.

**Code correction fee**

If a student has used a wrong code, e.g. ENG instead of ENS or AFN115 instead of AFN215, the correction will be made after the expiry date at an additional fee of R80 per module, which will be added to the tuition fees.

**Books**

Money for books can be paid into a separate account in advance. The amount paid is transferred to the student’s student card. The student card can be used to purchase books from suppliers at the Thakaneng Bridge.

At the end of each academic year all credits available on a student’s book money account will automatically be transferred to his/her tuition fees account.

**Parking disks**

**Motor cars and motorcycles: R40**

Parking discs are renewable annually and payable at Protection Services before the end of February. The National traffic regulations are also applicable on campus. All outstanding fines are placed on student accounts.

**Covered parking for students residing in residences**

**Allocated parking bay: R410**

This amount is not refundable when a student leaves his/her residence.

**Student card**

**Replacement of lost or damaged student card: R55**

**Electricity levy**

**Electricity levy for a refrigerator in hostel: R230–R280 per year**

**Campus levy**

**Residential students: R240**

**Non-residential students: R150**

Postgraduate, e-learning and students registered at the School for Open Learning who do not reside on campus do not pay a campus levy.

**Student diary: R55**

**Bursary and loans**

The attention of bursary holders is drawn to the fact that it is their responsibility to ensure that bursary donors make payments in time and in accordance with the university regulations. Bursars have to provide their sponsors with details of their accounts. If a sponsor does not pay a student’s account in time, interest will be charged and debited to the account and the student or his parents or guardian will be responsible for payment of such interest.

**Rules with regard to fees**

**NB: Tuition and accommodation fees are payable in full, irrespective of whether any services to be rendered by the university is disrupted by circumstances beyond the university’s control such as strikes, student boycotts, public unrest or any other disruption on campus.**

**Amendments**

All university fees are determined by the Council, but may be amended at any time. The amended fees will be payable on request.

**Payment dates**

Tuition fees are calculated per course or semester. Accommodation fees are also calculated per semester. All fees must be paid, whether an account has been received or not. (It is the responsibility of the student to supply the university with his/her correct postal address, e-mail address and contact numbers, and to make enquiries should he/she not receive an account.)

**SA Students:**

First semester: All fees for the first semester are payable on/before 31 March. Second semester: All fees for the second semester are payable on/before 31 August.

**International Students:**

First semester: All fees for the first semester are payable on/before 31 March. Second semester: All fees for the second semester are payable on/before 30 June.

All other fees, including the amenities levy, are payable no later than the end of the month following the month in which the transaction took place as indicated on the account, unless specifically stipulated otherwise in the regulations.

**Fees in arrears**

If a student is in arrears with the payment of any account of the university, the university has the right, notwithstanding any arrangements that the student may have made for an extension of time or otherwise, to refuse to mark any examination papers and to withhold statements of results, study

records, certified examination timetables and examination results until the amounts in arrears have been paid to the university.

Certificates of conduct, certified statements and certificates for degrees/ diplomas will only be issued after all fees in arrears have been paid to the university.

**Re-registration**

If a student has not settled his/her account with the university for the previous year (with the exception of a study-loan account) in full, the university may, irrespective of whether the student has arranged for extension of time or otherwise, refuse his/her re-registration unless the account in question has been settled in the meantime.

**Incorrect registration**

Should the university admit a student to or register a student for any degree or course, and it later appears that the student does not qualify for it, the student shall remain responsible for all amounts (including, but not limited to registration fees, tuition fees and residence fees) that are payable, as in the case of a student who cancelled his/her studies, and the rules and regulations that apply in that case shall apply mutatis mutandis.

**Late registration fee**

If approval for registration of a module is granted to a student after the closing date for registrations, an additional amount of R200 per module for late registration will be charged.

**Disciplinary measures**

A student remains liable financially even if prevented by any regulation or rule of the university to continue his studies for a degree or diploma or to take individual courses.

**Default of payment**

Should a student fail to settle his/her account with the university, the university shall, notwithstanding any other rights, be entitled to hand over the account to an attorney for collection.

**Discount on Tuition and/or Accommodation fees**

If three or more students as dependants from the same family (children, stepchildren, adopted children but excluding children-in-law or married children), study and/or reside in university residences simultaneously, the following discount will be allowed (only on the amount payable for residing in residence and on modules the students are registered for):

Three Students:	10%
Four or more students:	15%

Fees payable (continued)

The following conditions for granting discount will be applied:

- Discount may only be claimed for full-time undergraduate students.
- All dependants/students must be under 26 years of age.
- Students who receive any other form of financial aid for tuition and/or accommodation do not qualify to claim this discount.
- Discount will be recalculated, should one or more of the mentioned students discontinue their studies or leave the residence.
- Written application must be made for the discount and full particulars of the students concerned must be stated.
- Discounts may only be claimed for the current academic year.

Handling fees for refunds

From time to time, a credit balance appears, for whatever reason, on the account of a student at the University of the Free State. The student concerned then requests that the amount be paid out to him or her.

Any credit balances on student accounts will only be paid out if –

- all the outstanding university fees (e.g. tuition fees and accommodation costs) of the student concerned have been paid; and
- the necessary documentation, as prescribed by the Finance Department of the University of the Free State (“the Department”), has been properly completed and submitted to the Department.

Furthermore, credit balances will only be paid out to the person confirming on the application for admission that he/she is responsible for payment of the student’s fees (“the Payer”). Credit balances will not be paid out to any other person without the written permission of the Payer.

Credit balances on the accounts of students studying with the aid of bursaries or student loans will only be paid out to the student with the written permission of the entity that granted the bursary or loan to the student.

The processing of a refund request takes a minimum of **five (5) working days**. In cases where financial aid is received, refunds will be done strictly according to the instructions on the bursary-/loan letter.

Handling fee:

Refunds R1 – R5000	R60,00
Refunds R5001 – R10000	R120,00
Refunds R10001 – R15000	R180,00
Refunds R15001 >	R240,00

RD Cheque	R145,00
-----------	---------

Notes and study material

The prices of supplementary notes cannot be quoted, as these prices are not fixed. Study material/notes are automatically prepared when students register and are charged to the tuition fee account accordingly. It is a student’s responsibility to collect the study material.

Departmental fees

In some courses fees are payable for other purposes supplementary to tuition fees. All enquiries in connection with such fees must be submitted to the department concerned.

Where to pay

ABSA Bank

- Any branch
- Name of account: University of the Free State
- Branch code: 630734
- Account number: 1570 151 688
- Reference number: one of the following:

**100** directly followed by student number if the payment is for tuition and accommodation fees

**101** directly followed by student number if the payment is for meals

**102** directly followed by student number if the payment is for books

Reference numbers for DEPOSITS

**103** directly followed by student number for accommodation reservation deposit

**104** directly followed by student number for MBChB reservation deposit

**105** directly followed by student number for MBChB skeleton deposit

**106** directly followed by student number for Quantity Surveying reservation deposit

- Fax deposit slip to 051 401 3579.

Post Office

- Any branch
- Reference number: Student number
- Fax deposit slip to 051 401 3579.

Internet

- You have to register the university as a beneficiary at any branch of your bank.
- Use the same ABSA bank details as above
- Reference number for ABSA bank
- Fax proof of transaction to 051 401 3579.

Online Credit Card payment facility

<http://studentportal.ufs.ac.za>

NB: An official UFS student number is required when this facility is used for payment

Thakaneng Bridge: Cashiers’ office

Mondays to Fridays: 08:30–14:30

Tuition Fee Enquiries: 051 401 2806/3003 or [tuitionfees@ufs.ac.za](mailto:tuitionfees@ufs.ac.za)

# Student laptop initiative

*The University of the Free State supports the Student Laptop Initiative whereby students and staff of the UFS can buy Acer and/or Lenovo laptops at a reduced rate (maximum of 2 units per annum per buyer).*

Purchases can be done online from Lenovo at: [www.studentlaptop.co.za](http://www.studentlaptop.co.za) and from Acer at: [www.aceredu.co.za](http://www.aceredu.co.za).

For more information please feel free to contact Acer on 0800 ACER ED or Lenovo at 0861 724 005.

All permanent UFS staff is eligible to make use of this offer in their personal capacity.

All enrolled students for a specific calendar year can make use of this initiative.

*Vodacom would like to welcome all new first-years with this special offer:*

SAMSUNG GALAXY NOTE 10.1 + @ R399pm on Mofaya STD MyGig1

SAMSUNG GALAXY NOTE 10.1 + @ R429pm on Mofaya STD MyGig2

SAMSUNG GALAXY NOTE 10.1 + @ R479pm on Mofaya STD MyGig3

**When taking out this contract, you stand a chance to have your first year study fees for FREE!**

Contact Lolita on 082 2711 400 to find out the closest Vodacom store offering this deal. Valid from 15 November 2012 to 15 January 2013 and only for first-year students.

# Bursaries + financial aid

## Payment of academic merit bursaries

The class fees accounts of students who qualify for academic merit bursaries will be credited at the end of March with the amount of the bursaries after they have registered as students at the university.

The following scale is used to award bursaries:

Admission point	Amount
31–34	R2 380
35 – 37	R3 600
38–41	R 5 050
42	R 7 850
43+	R13 500

NSC Achievement level	UFS-Admission Point (AP)
7 (90% – 100%)	8
7 (80% – 89%)	7
6 (70% – 79%)	6
5 (60% – 69%)	5
4 (50% – 59%)	4
3 (40% – 49%)	3
2 (30% – 39%)	2
1 (0% – 29%)	–

These bursaries are automatically awarded to new students based on performance in the final matriculation examination.

If you matriculated before 2008, the M Score is calculated using the symbols achieved in the six best matric subjects (without taking standard or higher grade into consideration) passed during one examination. The formula mark is calculated based on the six subjects in which the highest percentages were achieved.



Symbol obtained in Grade 12 (M Score calculation)

Symbol	A	B	C	D	E	F
HG	8	7	6	5	4	3
SG	6	5	4	3	2	1

The following points scale is used:

M score	Amount
36–39	R2 380
40–42	R3 600
43–46	R5 050
47	R7 850
48	R13 500

Terms and conditions apply. Please consult the UFS website.

### Academic merit bursaries for senior undergraduate students

Academic merit bursaries are awarded based on the achievement of a student in a particular module and is linked to the tuition fees payable for that module.

- Tuition fees x total figure/100 x a calculation factor, example:
- Module XYZ = R300 x 75/100 x 0.80 = R180
  - Tuition fee = The tuition fee per module as applicable to the year of achievement.

### Calculation

The award is made with the provision that an average total examination mark of at least 75% is achieved in all the modules the student has registered for. In accordance with the above-mentioned provision, a student will qualify for a scholarship for every module/semester course for which a total examination mark of at least 75% is achieved.

### Academic merit bursaries for postgraduate students

Academic merit bursaries for postgraduate students are awarded based on the candidate’s achievements during study for an honours degree and are linked to the tuition fees applicable to the course in question. No academic merit bursaries are awarded for achievements in the postgraduate diplomas or certificates and the MBA degree.

The award is made on condition that the candidate obtains an average total examination mark of at least 69,5% in all the courses the person has

registered for in the specific honours course, and that the person enrolls for further study for a degree or diploma. The bursaries are awarded according to the following formula:

- Tuition fees for a full-time instructional programme (honours) as applicable during the previous year x combined mark (69,5% or more) x a calculation factor. (Should a student take longer than the minimum prescribed period of one year to complete his/her studies, a bursary will be awarded pro rata).
- Since 2002, academic merit bursaries of R10 000 are awarded to students who obtain their masters degree with distinction and who register for doctoral study at this university.

### Payment of academic merit bursaries

The class fees accounts of students who qualify for academic merit bursaries will be credited with the amount of the bursaries after they register as students at this university.

#### Bursaries for culture, art and leadership new first-year students

Prospective students must apply before 15 February of the year of study concerned. The following persons will qualify:

- |   |        |
|---|--------|
| • Head boys/girls   | R1 750 |
| • Deputy headboys/girls   | R1 100 |
| • Olympiad winners  | R7 300 |
| • Olympiad runners-up (2nd place)(national level)               | R2 440 |
| • Olympiad runners-up (places 3–5)(national level)              | R2 190 |
| • Olympiad runners-up (places 6–10)(national level)             | R1 835 |
| • “Presidentverkenners”   | R1 835 |
| • Expo winners (Gold)   | R1 835 |
| • Achievements on international level (individual achievements) | Ad hoc |
| • Achievements on national level (individual achievements)      | Ad hoc |

In addition to the above-mentioned achievements, bursaries can also be awarded based on other cultural, art and leadership achievements. NB: In order to qualify for the abovementioned bursaries students must have obtained an Admission Point of at least 30 or an M Score of at least 32.

### Special merit bursaries for sport

Enquiries: 051 401 2475

Bursaries are awarded every year to sportsmen/sportswomen who can contribute towards improving on Kovies’ proud record in the field of sport. Applications for these bursaries close on 30 September (1<sup>st</sup> round) and 30 November (2<sup>nd</sup> round) each year.

### Sundry bursaries

The university has various bursaries available for general or specific fields of study or in specific departments and faculties.

Please visit the UFS webpage for more information at [www.ufs.ac.za](http://www.ufs.ac.za).

**NB:** In order to qualify for the above-mentioned bursaries students must have obtained an M Score of at least 32 or an Admission Point of at least 30.

### Financial aid for prospective and current students

Enquiries: 051 401 9359/3202

A quality product is never cheap. However, this should not dissuade you from studying! At Kovies we do our best to assist you in dealing with these financial challenges.

### Financial aid (loans) – National Student Financial Aid Scheme (NSFAS)

NSFAS loans are mainly intended for undergraduate studies with regard to both semesters. Study loans are also available for postgraduate studies: Only South African citizens qualify for a NSFAS loan.

#### Prospective students

Prospective first-year students must first apply for admission to the university and mark “YES” to point 7 of the Application for Admission. Students who marked “YES” will receive an application form for financial assistance by mail. Late application forms will not be considered. In order to qualify for loans, students must have obtained an Admission Point of at least 30 or an M Score of at least 32.

#### Current students

From the middle of June, current students can download application forms for financial aid from the UFS Website ([www.ufs.ac.za](http://www.ufs.ac.za)). Late applications forms will not be considered.

Terms and conditions apply. If you qualify for a bursary or loan and want to apply, contact:

The Deputy Director: Student Financial Aid  
University of the Free State  
P.O. Box 339  
Bloemfontein  
9300

# Dates

## Academic year dates for 2013

### First semester

(Excluding Faculty of Health Sciences)

<b>First term</b>	
First-years arrive:	19 January 2013 (see Welcoming of First-years)
Lectures commence:	1 February 2013
Rag Parade:	2 February 2013
Lectures end:	28 March 2013

<b>Second term</b>	
Lectures commence:	9 April 2013
Lectures end:	3 May 2013
Mid-year examinations:	6 May 2013 to 1 June 2013
Additional mid-year examinations:	10 June 2013 to 22 June 2013
End of first semester:	22 June 2013

### Second semester

(Excluding Faculty of Health Sciences)

<b>Third term</b>	
Lectures commence:	15 September 2013
Lectures end:	20 September 2013

<b>Fourth term</b>	
Lectures commence:	1 October 2013
Lectures end:	18 October 2013
End-of-year examinations:	21 October 2013 to 16 November 2013
Additional end-of-year examinations:	25 November 2013 to 7 December 2013
End of second semester:	7 December 2013

Residence accommodation:  
Junior/Senior residences

Accommodation period during the academic year (UFS Calendar)

The agreement for accommodation entered into with a student will, subject to other stipulations or regulations as approved by the Council from time to time, be binding for the full accommodation period. The student or his/her parent/guardian or both are responsible for the full accommodation fee for the accommodation period as set out here.

*Accommodation at Kovsies is your second home and qualifies you for life!*

*Life in a student residence at the UFS can be a very exciting and rewarding experience. If you are accepted into one of our residences, you will benefit from a completely new world of friendships that can last you for the rest of your life.*

At the residences of the UFS, you can grow as a person. At a university, there are many people from different language, racial and cultural backgrounds. Living and learning in this diverse environment can give you a definite advantage over many other jobseekers once you graduate and will definitely help you later in life.

Due to the popularity of our residences, there is a waiting list of applicants so you should apply as early as possible if you want to secure a place.

The leadership of residence communities consists of a Residence Head, Prime, Residence Committee and Peer Mentors. This leadership team creates a residence environment where every student feels welcome and inspired. All residences' communities are driven by a set of shared values, which mediates a culture of mutual accountability.

First-year students are supported in their transition to higher education by means of a Peer Mentor system in residences. Each first-year student is allocated to a Peer Mentor who facilitates individual conversation as well as conversations in small group format with students. For more information contact Ms Zanete du Preez at (051) 401 3737 or dupreezz@ufs.ac.za.

Rooms are furnished with the basics. You may bring your own curtains and linen. We recommend extra blankets for winter.

The following items are recommended to bring along:

- Two padlocks for cupboards
- Toiletries
- Reading or desk lamp
- Radio
- Students may bring frying pans or two-plate stoves for preparing food, but may not use it in their rooms. These appliances may only be used in the communal kitchens. If they are to prepare their own meals, students should also bring crockery and cutlery.
- For a minimal fee, students may install refrigerators in their rooms. You may also use an immersion heater, microwave oven, and personal computer in your room.
- You may not bring your own furniture or heater.
- Every residence is equipped with industrial washing machines and tumble dryers. Students are requested to use this equipment with care. You need to bring your own iron, washing powder, laundry bag, clothes pegs, etc.
- A laundry service is also available at an affordable tariff. Contact Kovsie Laundry Service, 051 444 6348 or 051 401 3214/082 829 6487.
- In addition to clothes for everyday wear, bring outfits for social occasions, church and any sports you are planning to participate in. Men should bring a sports jacket and tie. A tracksuit and running shoes are recommended, and an overall or old clothes for dirty work during Rag Week (painting, float building).

No equipment or furniture may be removed from the residence or rooms.

Application for residence

To be one of the privileged residents you need to:

- Complete the application form for admission as well as the application form for residence as soon as possible.
- Ensure that the forms are completed correctly in order to avoid delays.
- Keep your reservation deposit ready in case you are selected for placement in a residence (refer to the placement procedure on the application form).
- Take note of the Academic Admission criteria for residences. Make sure that your Admission Point meets the criteria.
- Indicate your involvement/achievement in academics, leadership, culture and sport.

Special arrangements

Students who wish to arrive earlier

Students who wish to arrive before 10:00 on the opening day at the beginning of a term, must make prior arrangements with the residence head/prime.

Accommodation during vacations

Applications for accommodation during vacations will be considered for the following reasons only:

- Officially scheduled academic obligations.
- Official sports tours.
- Meetings of groups such as Cantare Revue Group, etc.

Prior written permission must be obtained.

If accommodation is required outside the times specified in the Accommodation Period, an additional amount of R45,00 per day is payable. This amount does not include meals. Students must apply for accommodation during vacations before a specific date.

Payment of accommodation fees

Fees (men’s and women’s residences)

Junior Residences:	
Double room shared	R15 640,00/year
Single room	R17 420,00/year
Senior Residences:	
Double room shared	R15 890,00/year
Single room	R19 620,00/year
New Residences:	
	R22 835,00/year

Reservation deposit (first placement in residence)

An amount of R1 430 is payable as a reservation deposit.

The reservation deposit will be forfeited when a student or prospective student to whom accommodation has been allocated and reserved, does not show up, or in cases specified in the accommodation stipulations.

The reservation deposit may be used at the sole discretion of the university to recover any contingencies resulting in costs, losses, damages, penalties, etc.

Repayment of reservation deposit

The reservation deposit will be paid back in the following cases only:

- If a prospective student, who has applied does not comply with the admission requirements.
- If a prospective student applies for admission to a course, where selection is required, and is not accepted by the university for the course concerned.
- If a prospective student dies.
- If a prospective student has to cancel a reserved place for medical reasons and can submit a satisfactory medical certificate.
- If other exceptional circumstances convince the university that paying back the fee is justified.
- If a student leaves the residence at the end of his/her term of accommodation.
- On request, this deposit will be transferred to the student’s tuition fee account after the student has left the residence and will first be set off against other outstanding fees.

Cancellation fee

- A student who reserves a place in a residence, but who does not turn up will be responsible for payment of an amount of R1 430.
- A student who reserves a place in a residence, but cancels it after 30 November, will be liable for an amount of R1 430.

Financial responsibility for accommodation fees

Leaving the residence

If a student leaves the residence during the year, he/she must notify the university in writing by registered post (addressed to: Director: Housing and Residence Affairs, Steyn Annex) or give notice personally at the building. The student will be held responsible for the fixed cost that is determined from year to year. If a student terminates his/her accommodation during a quarter, he/she will be liable for the full quarterly payment. Details are available on request.

Damage to university property

Any damages for which a student is liable because of loss of or damage to university property will be debited directly against his/her account.

Theft of or damage to personal property

The university does not accept any responsibility for the theft of or damage to students' property.

Kovsie student accommodation (continued)

Residing in residence without being registered as student

If a student resides in a residence but leaves the residence before he/she has registered for a course, he/she will be held responsible for the period he/she resided in the residence at the normal fee.

Cancellation procedure

If a student leaves the residence during the course of the year, the university must be informed in writing. A cancellation form must be obtained from the Division Housing and Residence Affairs, filled out in full, signed and handed in. The date on which it is handed in, or the cancellation date (whichever is the latest date) will be regarded as the official cancellation date. An acknowledgement of submission of the cancellation form will be given to the student.

Unrest

Accommodation fees will be fully payable regardless of whether any services provided by the university are interrupted by circumstances beyond the control of the university, e.g. strikes, student boycotts, public unrest or any other disruption on campus.

Dates for payment

SA Students:

The accommodation fee for the first semester is payable on or before 31 March and for the second semester on or before 31 August of the same year.

International Students:

The accommodation fee for the first semester is payable on or before 31 March and for the second semester on or before 30 June of the same year.

Payment methods

Accounts can be paid by different methods as mentioned previously.

Meal system

Paid meals are offered in the dining halls of Soetdoring and Roosmaryn on a cafeteria basis, and need not be reserved in advance. Food can also be bought at the several take-away shops at the Thakaneng Bridge.

To ensure that students can obtain meals an amount of R250 is credited to each student's meal account at the beginning of the year, but is only available once the student is registered. Until registration, students must pay cash for their food. This amount is debited against the student's tuition fee account, and is payable in addition to the regular amount.

Each student deposits money for meals in terms of his/her budget at the cashiers at Thakaneng Bridge, next to the ABSA branch. These deposits will be credited to their student cards within 48 hours. Cash purchases can also be made.

Enquiries: Mr Fred Kruger: 051 401 9300 - E-mail: krugerfj@ufs.ac.za

Advance payment of meal money

Money for meals is paid into a separate account in advance. If a student's meal credit runs out during the year, he/she can pay in a supplementary amount in cash on his/her meal money account.

If there is an unspent amount on a student's meal money account at the end of the year, the amount will be transferred to his/her tuition fees account.

Contact details of junior and senior residences:

(Ladies) Ms M Naidoo: 051 401 3455 or naidoom@ufs.ac.za  
(Men) Ms V Kheta: 051 401 3562 or vkhetha@ufs.ac.za

Ladies residences

Akasia

Residence Head: 051 401 2468  
Prime: 051 401 9141  
E-mail: akasiakh@ufs.ac.za

Emily Hobhouse

Residence Head: 051 401 2147  
Prime: 051 401 3664  
E-mail: hobhoukh@ufs.ac.za

Kestell

Residence Head: 051 401 2146 / 3110  
Prime: 051 401 9546  
E-mail: seitshirosjd@ufs.ac.za

Madelief

Residence Head: 051 401 2421  
Prime: 051 401 9435  
E-mail: dickl@ufs.ac.za

NJ van der Merwe

Residence Head: 051 401 2159  
Prime: 051 401 9144  
E-mail: malefanep@ufs.ac.za

Roosmaryn

Residence Head: 051 401 2563 / 9578  
Prime: 051 401 9146  
E-mail: mohapimtp@ufs.ac.za

Soetdoring

Residence Head: 051 401 2169  
Prime: 051 401 9150  
E-mail: soetdkh@ufs.ac.za

Vergeet-my-nie

Residence Head: 051 401 2485  
Prime: 051 401 9145  
E-mail: vmnkh@ufs.ac.za

Wag-'n-Bietjie

Residence Head: 051 401 2201  
Prime: 051 401 3178  
E-mail: kaarsb@ufs.ac.za

Welwitschia

Residence Head: 051 401 2516  
Prime: 051 401 9151  
E-mail: ralle@ufs.ac.za

Men's residences

Abraham Fischer

Residence Head: 051 401 9715 / 3470  
Prime: 051 447 0730  
E-mail: afisher@student.ufs.ac.za

Armentum

Residence Head: 051 401 3397 / 9557  
Prime: 051 401 9152  
E-mail: nelwn@ufs.ac.za

JBM Hertzog

Residence Head: 051 401 2602/9717  
Prime: 051 401 9148  
E-mail: badenh@ufs.ac.za

Karee

Residence Head: 051 401 2693 / 2237  
Prime: 051 401 9142  
E-mail: teisnjp@ufs.ac.za

Khayalami

Residence Head: 051 401 2483  
Prime: 051 401 9143  
E-mail: jordanad@ufs.ac.za

Tswelopele

Residence Head: 051 401 3224/3774  
Prime: 051 401 3646  
E-mail: nhlapo@ufs.ac.za

Villa Bravado

Residence Head: 051 401 3966/2950  
Prime: 051 401 3609  
E-mail: duplessispj@ufs.ac.za

Postal Address for resident post:

Name of residence  
PO Box 12950  
Brandhof  
9324

City Residences

What is a City Residence?

A city residence is a residence that consists of residents who live in private homes, student houses, townhouses, flats, rooms, etc. off the campus. The students who are members of the city residences must arrange their own accommodation in the city and off the campus.

Students who live in the city are free to decide whether they want to join one of the city residences. Each city residence has a gazellie (or a large lounge with a kitchen and bathroom) on the campus where the "residents" get together to hold residence meetings, to study or just to socialise. The gazellie provides the city students with a place where they can get together, since they are widely distributed all over the city.

The purpose of a city residence is also to give the students who cannot live in a residence on the campus the opportunity to participate in organised student activities. It is of great importance to the university also to give these students the opportunity to develop as total or balanced persons – through participation in academic and non-academic activities.

A residence head and residence committee are in charge of each city residence. These persons are responsible for managing the city residences and seeing to it that all activities that are offered take place within the rules of the university.

Within the city residences, students can participate in all activities also offered by campus residences.

Accommodation

Membership of and participation in a city residence

All registered students who do not live in one of the university's residences, senior residences, student flats or rooms, are automatically members of a city residence. Participation takes place by means of association – the city student therefore has a free choice to join one of the city residences.

The city students have the choice of joining one of seven city residences, namely:

Female students:

Arista

Residence Head: 051 401 2118

Marjolein

Residence Head: 051 405 3125

Sonnedou

Residence Head: 051 401 2496

Male students:

Legatum

Residence Head: 051 401 2118

Veritas

Residence Head: 051 405 3536

Unisex:

Kagiso

Residence Head: 051 401 2118

Medix

Residence Head: 051 405 3394





### Student Life Colleges

At Kovies, student life forms part of and take place in line with your in-class learning experience. Outside the classroom student life programmes assist you to successfully adapt to university and develop your leadership potential and skills you will need in the workplace one day.

*Student life also focuses on developing your understanding of citizenship and willingness to participate in community service.*

These programmes are presented in Student Life Colleges where all students are placed. A Student Life College consists of a city residence (off-campus student association) and four (4) campus residences that combine as a group to promote student success and to participate together in development programmes outside the classroom.



All students belong to a Student Life College. Off-campus students who have not yet become members of a city residence are placed in a College and they may then decide if they wish to take up membership with the city residence of that College, or of another College. Thus, as a student, you will be placed with a Student Life College and you can participate in your College in all the programmes for leadership, career and citizenship development. Your College-experience begins with your participation in the GATEWAY College that kicks off at the start of the year. The GATEWAY College presents orientation programmes for all students – from first-years to postgraduate students.

If you'll be a new student at Kovies in the near future it is important that you join the GATEWAY College and participate in other programmes that will be offered in your Student Life College. See the list of Student Life Colleges attached to determine which College you belong to and when your College will participate in the GATEWAY programme.

#### The colleges are as follows:

##### North College

Welwitschia  
Tswelopele  
Madelief  
Vergeet-my-Nie  
Veritas (City residence)

##### South College

Armentum  
Villa Bravado  
NJ van der Merwe  
Emily Hobhouse  
Marjolein (City residence)

##### Central College

Soetdoring  
Wag-'n-Bietjie  
Karee  
Akasia  
Kagiso (City residence)

##### East College

Khayalami  
Roosmaryn  
JBM Hertzog  
Arista (City residence)  
Legatum (City residence)  
Sonnedou (City residence)

##### West College

New Residence 1  
New Residence 2  
Kestell  
Abraham Fischer  
Imperium (City residence)

### Leadership Development

At Kovies, learners become leaders through a number of leadership development opportunities. You can already apply in your first year to participate in our International First-Year Leadership Programme where you may travel abroad and meet student leaders from across the globe. However, you will also find other opportunities and formal leadership development programmes such as the PO10SEE Adventure camp that focuses on leadership development with adventure activities.

Leadership bursaries are also provided to students that volunteer as student leaders in student life programmes. You also have the opportunity to develop and refine your leadership capacity and skills by participating in student life activities and availing yourself of leadership roles such as in student associations and residences or, amongst others, as part of Kovies Rag

Community Service and Kovies Media. You also have the opportunity to form part of the executive committees of the Student Representative Council and its sub-councils.

All student leaders receive formal leadership development and training in which you are certified for attendance and which forms part of building your career profile.

Enquiries: 051 401 2716

### Learning Communities and Student Associations

Lively and dynamic student associations comprise a major part of Kovies student life. Different societies address different interests of students and arrange outdoor, adventure, spiritual, cultural, political and social activities.

Different associations often collaborate to debate specific themes, or arrange joint programmes and then find a learning community to investigate the topic. Students participate in the activities in order to get to know more about the learning community. Kovies students still boast learning communities addressing leadership, social justice and street theatre.

Students are encouraged to become a member of a society and participate in a learning community.

### Rag Community Service

For most people Kovies Rag Community Service is synonymous with the much anticipated and fun-filled parade, which annually takes place during January in Bloemfontein. Kovies Rag immediately conjures up images of fun and spectacular floats, accompanied by music, laughter and sunburnt students cradling money tins.

However, the annual Rag Parade and the three weeks' frenzied activity that precedes it represent only a small segment of the broad range of fundraising and community service activities that we engage in. The energy and enthusiasm of the Kovies students ensure that this active fundraising organisation continuous its vast activities throughout the year.

Rag is an acronym for "Reach and Give". This underlines the spirit of giving to those less fortunate. Each student is encouraged to give and to live a life to make a difference. Kovies Rag Community Service will continue to provide and care for the less fortunate through the work and enthusiasm of the students.

Enquiries: 051 401 2718 / 3768 / 2568 / 2731

### Kovies Culture

The University of the Free State has a proud cultural history and has experienced a number of exciting and dramatic changes. However, we do not change what has worked well and old favourites like the Serenade competition, Stagedoor and Mosaic Day, to name but a few, will always be part of the Arts and Culture portfolio.

New projects include, amongst others, a documentary film festival, national discussion series, cultural tours, a photography competition, Kovies Extravaganza and a HIP HOP competition. Students with a passion for choral music have a choice of a few choirs on campus and achievers in cultural areas are not only awarded by getting experience, but can also apply for cultural bursaries.

Arts and Culture projects on campus are aimed at offering each student the opportunity to realise his/her culture and identity on campus by means of a wide variety of activities and projects.

Enquiries: 051 401 9876

### Spiritual Development

Students are encouraged to participate in activities for their spiritual development offered by religious communities. Spiritual societies are allowed to collaborate with students on campus.

Christian churches that want to work on campus have to join the Campus Ministries Forum, a forum for all churches that want to work with students.

#### Churches

AGS Universitas	051 522 8005
Anglican Church	051 447 6053
Afrikaans Protestant Church	051 446 0077
Baptist Church	051 451 1017
Christian Revival Church	051 522 3976
Creare/Our Father's Home	051 522 4636
Evangelical Lutheran Church	051 448 0725
Fountainhead Church	051 523 3859
Methodist Church	051 447 2453
Dutch Reformed Church Bloemfontein	051 446 0133
Reformed Church (Bloemfontein)	051 446 1212
Roman Catholic Church	084 376 2837
Seventh-Day Adventist Church	051 447 8271
Student Dutch Reformed Church	051 444 2981
Universitas Dutch Reformed Church	051 522 4911
Full Gospel Church of God	051 448 0566



Merle Naidoo  
Lecturer in Geography at  
the Qwaqwa campus

### Qwaqwa – student life

*Our Qwaqwa Campus offers a student-life experience which include many of the highlights of student life at our other campuses, but also provide unique experiences possible only with this student community.*

Being a smaller campus students experience a greater sense of community and you will be able to more easily establish and build meaningful friendships.

Student life here grows daily with such new initiatives as the recent establishment of the debating and United Nations student associations on campus. Apart from the local rollout of the GATEWAY First-Years’ College and Rag Festival, you can also look forward to leadership development events offered at some of the best adventure locations available in the country.

Many opportunities are available to participate as a volunteer in community service programmes and as a leader in a number of student associations and residences on campus. Strong religious, arts and culture student associations allow you to participate in a number of specialist choirs that perform on campus but also elsewhere. New sport and other recreational facilities on campus allow you to participate actively in student sport.

You will be able to participate and compete in a number of sporting codes at the newly established annual intra-varsity games between campuses of the university. Students that perform well in general student life and their studies also compete for a number of prizes at the annual Student Excellence Awards hosted at the campus.

### Student Counselling and Development

This unit provides services to current, as well as prospective students of the UFS:

#### Personal development

##### Individual

We offer individual, confidential counselling in various psychological, emotional and developmental issues. Depression, anxiety, relationship problems, eating disorders, low self-esteem, grief, adjustment, assault, rape and anger management are some of the issues we address.

##### Group

A variety of developmental workshops are presented on the various challenges that students face, ranging from Stress-Management, Self-Esteem, Emotional Intelligence and Relationships. In addition, there are also numerous support groups running.

#### Academic support

- Career counselling for prospective and current students
- Study skills training

#### Career development

The Career Office prepares students for the world of work, through the provision of employment preparation skills training, such as CV writing, job hunting and interview skills. The office also runs a Graduate Recruitment Programme, exposing students to industries through company presentations and career fairs. A majority of the above-mentioned services are offered to registered UFS students free of charge.

Enquiries: 051 401 2853 • Fax: 051 444 3345 • [www.ufs.ac.za/kovsiecounselling](http://www.ufs.ac.za/kovsiecounselling)

### Unit for Students with Disabilities

The Unit for Students with Disabilities (USD) aims to ensure that the University of the Free State increasingly becomes an accessible higher education institution for students with disabilities.

#### The USD assists students to gain access to:

- Study courses
- All buildings on campus
- Learning material
- Residences
- Sporting activities
- South African Sign Language Interpreter service for deaf, hard of hearing and deafened students
- Classrooms

### The all-in-one Kopsie Campus (continued)

- Computer facilities (the USD’s computer lab houses the latest assistive technology and software; alternative furniture and adapted hardware for physically impaired and blind students)
- Specialised exam and test venues for alternative test and exam procedures

#### The USD provides a support service to the following categories of students with disabilities:

- Specific learning difficulties (e.g. Dyslexia, Attention Deficit Disorder, Hyperactivity)
- Mobility impaired (e.g. wheelchair users, amputees, Cerebral Palsy, Muscle Dystrophy, Spina Bifida, Multiple Sclerosis)
- Visually impaired – (e.g. blind, partially-sighted, eye-conditions). Students receive all their study material and text books according to the format of their choice, which includes:
  - \* Braille
  - \* Audio (material is read to them on a digital recorder)
  - \* Enlarged material
  - \* E-text
- Hearing impaired (Deaf, hard of hearing and deafened)
- Debilitating psychological and other chronic conditions (e.g. Schizophrenia, Epilepsy, Panic disorder)
- Temporary impairments (e.g. a broken hand)

#### Special arrangements include:

- Amanuensis for some students during tests/exams
- Application for extra time during tests/exams according to their specific impairment. (This is done via a formal process of testing and interviewing by a panel of Student Counselling and Development.)
- On request tutors are arranged for students in cooperation with the NATP (existing tutor programme) on campus.

Students, who would like to make use of the services and support, must please visit the Unit in the SASOL Library or contact the following numbers:

Enquiries: Mrs Hetsie Veitch • 051 401 3713 / 9348 • E-mail: [veitchhp@ufs.ac.za](mailto:veitchhp@ufs.ac.za)  
Mrs Martie Miranda: 051 401 9348 • E-mail: [mirandamh@ufs.ac.za](mailto:mirandamh@ufs.ac.za)

### Sport and Health

#### KopsieSport

*Our motto is: Participate, become involved, become part, taste the joy of being a student. Make use of opportunities and become a fully balanced human being.*

Sport forms part of the cornerstones in developing students at Kopsies. The achievements of our students are known countrywide. Kopsie achievements

are recorded in provincial, national and international records. KopsieSport invites first-year students to become part of the proud tradition of sport at Kopsies.

#### The UFS offers the following to everyone who wants to participate in sports.

- Top quality sport
- Top quality amenities
- Competition to compete at the highest level in your type of sport
- Recreational opportunities and gymnasium
- High-Performance Sports Centre

Enquiries: 051 401 2580 • E-mail: [prinsldb@ufs.ac.za](mailto:prinsldb@ufs.ac.za) • [spvdw@ufs.ac.za](mailto:spvdw@ufs.ac.za)

#### Sport amenities

- Pellies Park, the heart of the UFS athletics club, offers a modern club and all the amenities for the athlete.
- Three cross-county courses of which one is a permanent course.
- XEROX Shimla Park, the UFS rugby mecca with a fully equipped clubhouse as well as four other rugby fields.
- Cricket: The Oval with an excellent clubhouse and four outfields.
- Three soccer fields.
- A tennis complex with eighteen nets, two with lights.
- Netball facilities with eight fields and a clubhouse.
- An Olympic-standard swimming pool.
- Facilities for volleyball, badminton and five squash courts.
- Two astro hockey fields with a clubhouse and six grass fields.
- Two basketball courts.
- High Performance Sports Centre

For any enquiry or advice, the staff members of KopsieSport are at your disposal.

#### Types of sport and organisers

Athletic Meetings, Road Running & Cross Country	051 401 2859
Tri-athlon, biathlon, duathlon, pentathlon	051 401 2859
Head Rugby Coach	051 401 3483
Rugby	051 401 2648
Hockey (field and indoor)	051 401 2450
Head Netball Coach	051 401 3542
Netball, cycling, swimming, chess, tri-athlon	051 401 2231
Soccer, basketball, volleyball, dance sport	051 401 2807
Tennis, squash, table tennis, badminton	051 401 2643
Cricket, golf, fencing, archery, karate, judo	051 401 9344



**Robbie van Schalkwyk.**  
*Kovsiesport.*  
Second year student, Bsc  
Quantity Surveying. A contracted  
Shimla rugby player. SA Student  
Sevens member to the World  
University Championship in  
France, July 2012.

“All games present a  
simple strategy for life:  
Keep  
Going  
Forward.”



The all-in-one Kovsie Campus (continued)

Health and Wellness Centre

Health

The following medical services are available to students on campus:

- Medical Practice and Travel Clinic
- Doctors at practice
- Medication is provided after consultation if necessary
- Vaccinations are given e.g. Flu, Yellow Fever, Hepatitis A and B
- Professional nurse at practice

For an appointment: 051 401 2603  
E-mail for information: Johnr@ufs.ac.za (Riana Johnson)

Sport & Exercise Medicine Clinic

Services offered:

- Prevention, diagnosis, treatment and rehabilitation of sports injuries
- Prevention, diagnosis and treatment of medical conditions related to sports participation
- Prevention and rehabilitation of chronic medical conditions using exercise and lifestyle interventions

A multi-professional team consists of:

- Sports physicians
- Physiotherapists
- Dieticians

For an appointment: 051 401 2530  
E-mail for information: gesal@ufs.ac.za (Arina Otto)

Wellness

This office provides the entire student population with the following services:

- |                       |   |
|-----------------------|---|
| Individual assistance | Workshops for the development of persons skills inter alia:   |
| • Relationship issues | • Conflict management   |
| • Abortions           | • Budgeting   |
| • Trauma              |   |
| • Rape                |   |
| Group work for:       | Assistance to needy students:   |
| • Rape victims        | • Needy students are assisted with basic needs such as food, toiletries and study material according to defined criteria. |
| • Pregnant students   | • Part time work is offered when available.   |

Enquiries:  
Elizabeth Msadu  
For an appointment: 051 401 3258, E-mail: msadue@ufs.ac.za

HIV/AIDS

Services offered:

- Information
- Training (life skills and value-based)
- Free HIV Testing
- Support (one-on-one & support group for people living with HIV/AIDS)
- Community outreach & support (2 projects per year where students can be involved)

Peer Education Programme (Transformers)

The HIV/AIDS Centre offers you the opportunity to be TRANSFORMED:

Be part of a new generation that chooses to say:

- I have HIV knowledge
- I know my status
- I speak out freely about HIV prevention
- I care for the infected and affected
- I take responsibility for my own sexual health

Enquiries: Estelle Heideman. Contact 051 401 2998 or  
e-mail: heidemanee@ufs.ac.za for all your HIV-related needs.

Safety

Kovsie campuses are known as some of the safest in the country. Students' safety enjoys a lot of attention and Kovsie Security Services work 24/7 to safeguard the campuses as far as possible. Safety routes and patrols on campus, security cameras and other measures are applied to safeguard students. The Service Room renders a 24-hour service, where all matters of enquiries are handled.

Contact: Mr Dan Alexander 051 401 3369 / All-hours emergency: 051 401 2911

UFS student card

The Student Card Division of the university will issue students with a student card with their photos. Residence students' cards will be issued at the residences. Other students' student cards will be issued during registration at the student registration venue. This card will serve on the one hand as an identity card and on the other hand as a user's card offering access to the following systems:

- The library: The circulation of books and the making of photocopies.
- Squash courts: Reservation of courts.
- Residence dining halls: The serving of meals against deposits.
- Residence access control.
- Buildings and lecturing halls: Access control.
- Purchases at the Thakaneng Bridge: Books, takeaways, etc.
- The Sasol Computer Laboratory: Access control.
- The Computer Labs at level 3 and 6 in the library and at the Thakaneng Media Centre and printing.

Lost cards

If a student card is damaged or lost, the student concerned must deposit an amount of R55 as soon as possible and present the receipt at the Student Card Office, Suite 28, at the Thakaneng Bridge where a new card will be issued. Such a new card will have a higher level number than the previous one and will therefore cancel the previous card on the system.

Lost cards must be reported and cancelled at the Student Card Office or at telephone number 051 401 2799 during office hours.

Kovsie Student Life Centres

Kovsie campuses each boasts a Student Life Centre where students can socialise informally, enjoy meals and attend events and meetings. The Student Councils also have their council chambers and offices in the centres, and make conference facilities and smaller committee rooms exclusively available for students. Visit the centre in order to find out what specifically happens in the students' lives and to relax in a cheerful environment.

Student Life and  
Thakaneng Bridge Centre

The Student Life and Thakaneng Bridge Centre's tenants offer a variety of services and products, all within walking distances for all students. You are invited to visit the Student Life and Thakaneng Bridge Centre. We cannot wait to be of service to you.

Superette

Friendly Seven Eleven

Food outlets

The Deli  
Steers  
King Pie  
Mamas Kitchen  
Surf & Turf Café  
Vetkoek Factory  
Roasters Mini Restaurant  
Chili Spot  
Pizza Slice  
Sandwich Shop  
Treats  
Chick a Leecious  
Crouching Tiger & Hidden Dragon

Hairdressers

Ethnic hair

Restaurant

Träumerei  
Pimento (Staff Restaurant)

Optometrists

Mellin & Partners

Financial services

ABSA Bank and ATM  
Edu Loan  
FNB ATM  
Standard Bank and ATM  
Nedbank ATM  
Sanlam



## Kovsie Student Life Centres (continued)

### **Clothing**

Shop@UFS

### **Computer and copy services**

Bytes Document Solutions,  
(Xerox Authorised Distributor)  
Varsity Tech

### **Telephone services**

Nashua Mobile  
Ted's Cellular

### **Books, art and stationery**

Van Schaik  
Bloem Stationers

### **Accommodation**

KPA Private Accommodation

### **Student Information Service**

### **Kovsie FM Campus Radio Station**

### **South African National Blood Services**

### **Centre Manager**

Tel: 051 401 9042  
Fax: 0866911786

## **Library**

The UFS Sasol Library is located on the West Campus.  
Hours of service during semesters are as follows:

Mondays to Fridays: 08:00 – 22:00

Wednesdays: 09:00 – 22:00

Saturdays: 09:00 – 13:00

Undergraduate students may take ten books on loan at a time for 14 days. Books are issued on loan via a computerised system. At registration, a specific code is placed on a user's student card, and the card must always be shown before you will be allowed to take books on loan.

Enquiries: 051-401 3680

### **Photocopies**

Your student card ensures that you do not need to keep cash on you at all times when you want to use the photocopying machines in the library.

## **General information and liabilities**

### **Accidents**

As the university only insures its own risks, it cannot be held liable for accidents that happen to students. It is therefore recommended that students take out personal accident insurance.

### **Damage to students' personal possessions**

The university cannot be held liable for loss or damage to students' personal possessions. Residence students also leave their possessions in the residences during the holidays at their own risk. It is therefore recommended that students insure their possessions. Protect yourself and the property of the university. Any damage and/or theft must be reported to the Protection Services Division. Distinguish between fun and crime and respect other people's property.

### **Vehicles on campus**

It is recommended that students who keep vehicles on campus take out SASRIA (riot insurance). All students and members of the public who wish to use the roads on campus should purchase an access disk issued by the Protection Services Division of the university. The disc must be displayed on the windscreen.

If you do not have an access permit, you could receive a traffic fine. Persons who use the roads on the university campus or who park on the campus, do so at their own risk and the university do not accept any responsibility for any accident, loss or damage. Any damage or theft must be reported to the Division: Security Services.

