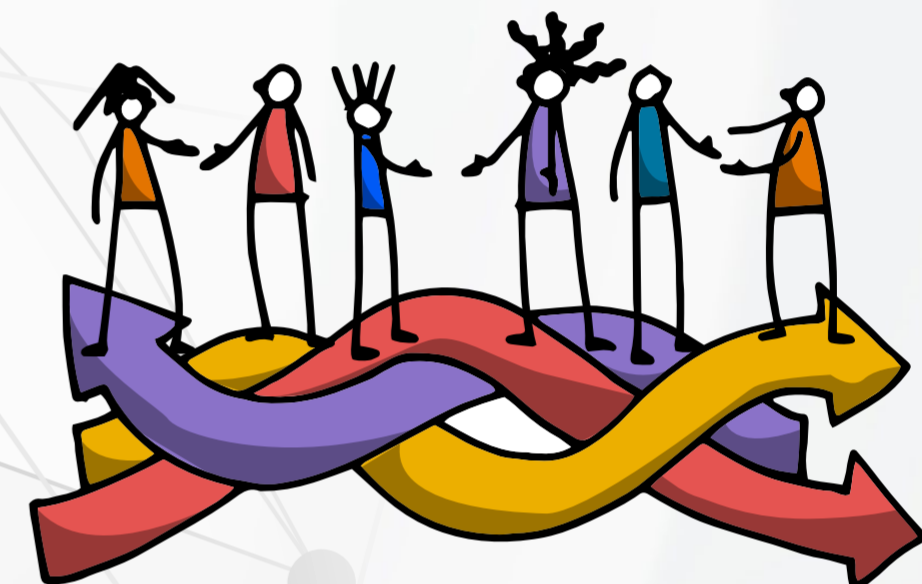


**NURTURING GRADUATE ATTRIBUTES**




**BUILDING EMBRACING COMMUNITIES**



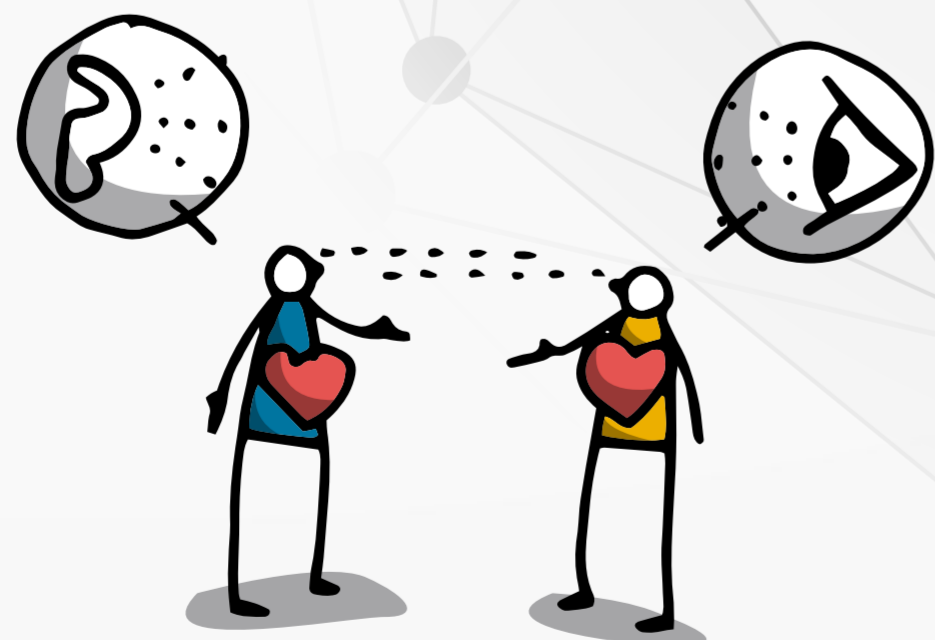
**CONSTRUCTING COLLABORATIVE INTERCONNECTIONS**

**KEY STRATEGIC AREAS**

**Certain about uncertainty  
Comfortable with discomfort**



**UFS·UV**  
STUDENT AFFAIRS  
STUDENTESAKE  
DITABA TSA BAIHUTI



**CREATING A SOCIALLY JUST CULTURE**



**DEVELOPING PROFESSIONALS**